



Rijkswaterstaat
Ministerie van Infrastructuur en Waterstaat

BenO Waddenzee - natuurmonitoring

Developing a comprehensive overview of abiotic & morphological indicators for the management of the Dutch Wadden Sea

Pitch NCK data day



The Why

- Protection and sustainable development of Wadden Sea area and the conservation of the unique open (and dynamic) landscape

Management challenges:

- Climate change
- Maintaining natural dynamics
- Stress factors e.g. dredging
- Many stakeholders & authorities

AGENDA VOOR HET WADDENGEBIED 2050



Koersen naar een veilig, vitaal en
veerkrachtig Waddengebied in 2050





M&M need shared insight in system trends

BASISMONITORING

Wadden

...ck of developments WS by exchanging
and knowledge between stakeholders'

Datahuis Wadden

Platform all data

*Digitale
rapportage*

...ocus abiotics

<https://basismonitoringwadden.waddenzee.nl/>



Digitale systeemrapportage

[Systeemrapportage Abiotiek Wadden, concept 0.51 \(testsystemrapportage.nl\)](https://testsystemrapportage.nl)

- Deltares has set up most of the data architecture and derivation of indicators
 - Data from different sources
 - Smart ways to calculate indicators
- First complete version available this summer

Digitale Systeemrapportage Wadden

- 1 Introductie
 - 1.1 Basismonitoring Wadden
 - 1.2 Doel
 - 1.3 Informatiebehoefte en indicatoren
 - 1.4 Proces
 - 1.5 Leeswijzer
 - 1.6 Wettelijke kaders
- 2 Hydrodynamiek
- 3 Meteorologie
- 4 Fysische waterkwaliteit
- 5 Morfologie
- 6 Informatiebehoefte
- Appendix
 - A Brondata en post-processing
 - B Gebruikte software en packages
 - C Versies

Published with bookdown

Deltares

Systeemrapportage Abiotiek Wadden, concept 0.51

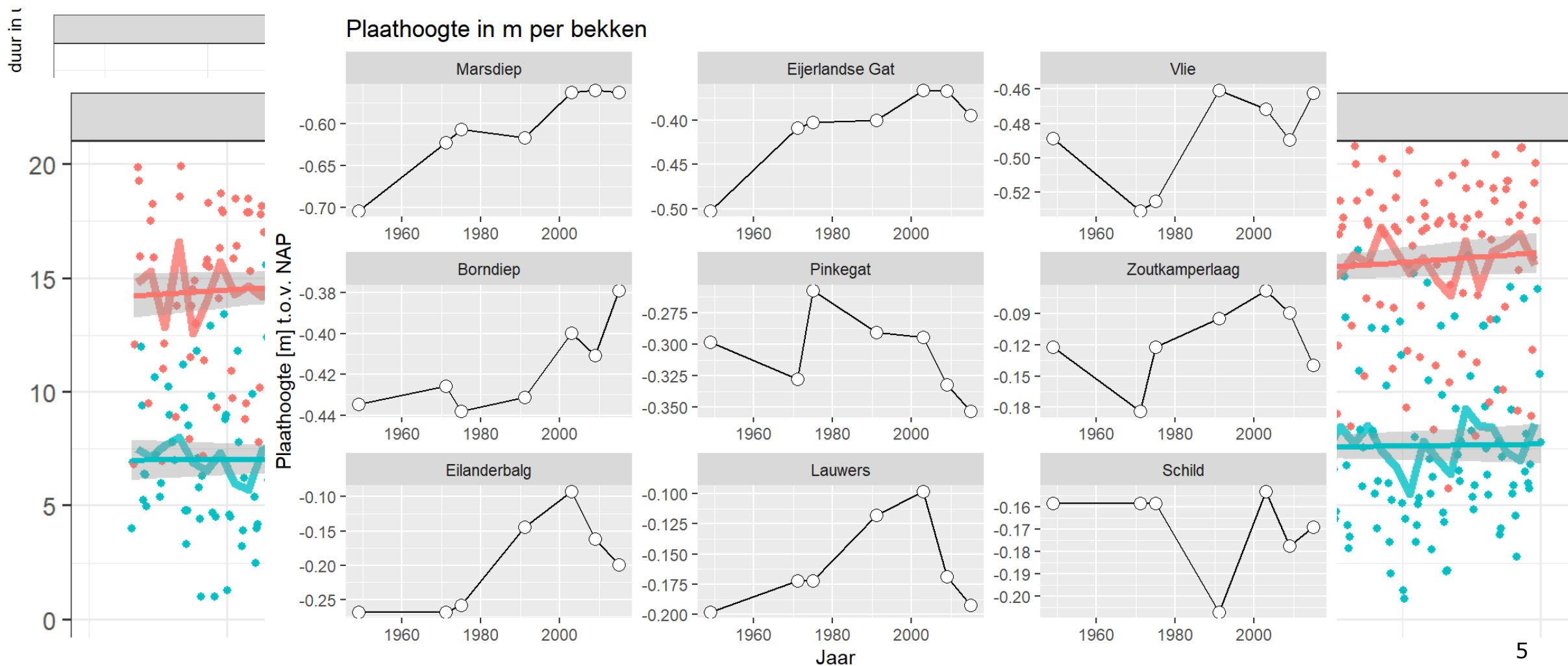
Natuurmonitoring, onderdeel morfologie

Willem Stolte, Julia Vroom, Giorgio Santinelli, Jelmer Veenstra, Claire van Oeveren

2022-03-30



Some data and trends





Where are we now?

- Digitale systeemrapportage = one piece of the Wadden data puzzle
 - Part of basismonitoring Wadden
- Tool to assist with management&maintenance questions
- On-going work is also used to:
 - Identify monitoring gaps
 - Test use-case
 - Guarantee long-term embedding&functionality

Feel free to use it already!





Thank you for your attention!

