

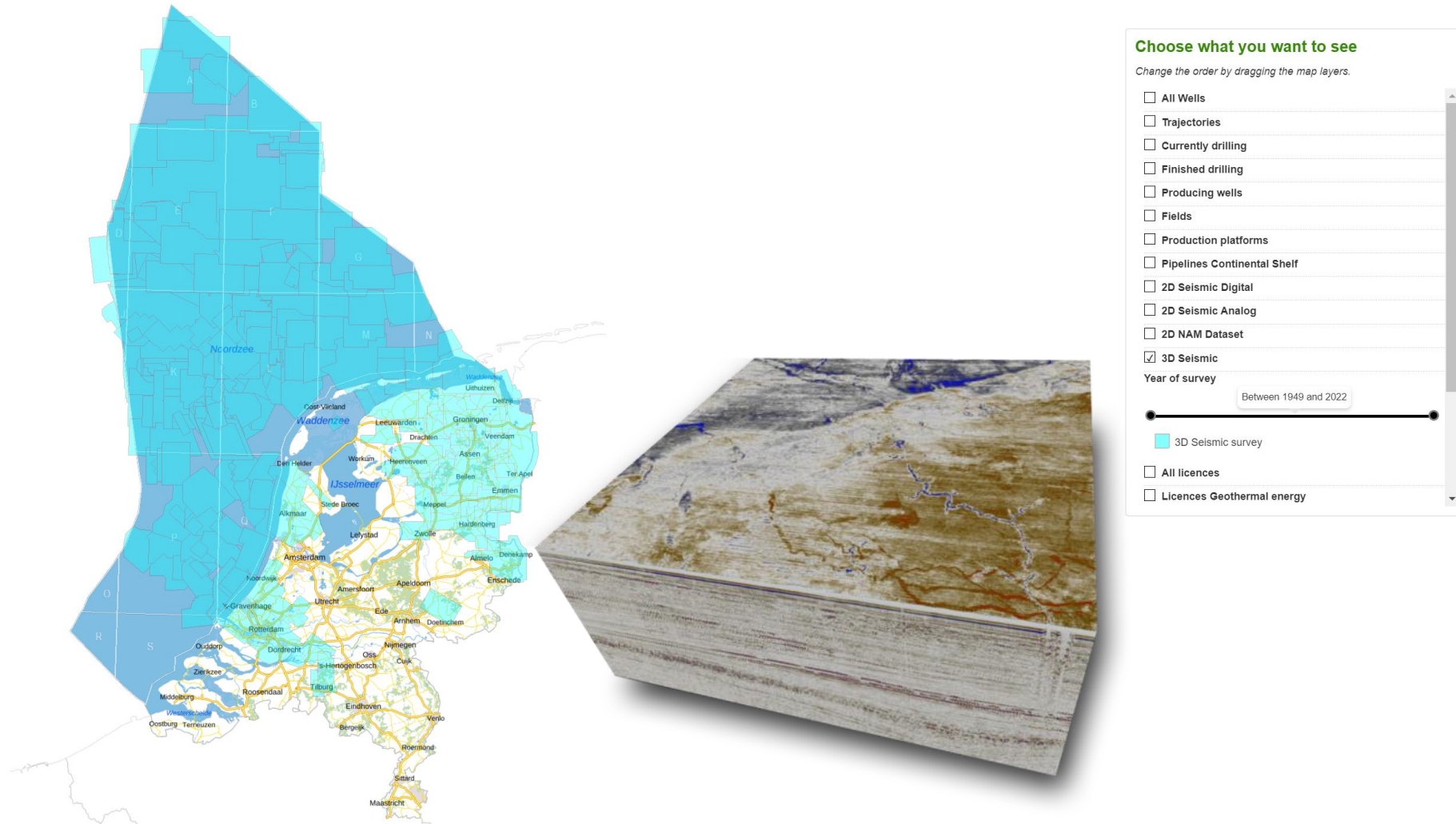
› **RECONSTRUCTION OF PAST LANDSCAPES**
SYTZE VAN HETEREN

COLLECTED FOR OIL AND GAS, USED FOR LANDSCAPES

ACOUSTIC DATA ON WWW.NLOG.NL/EN/MAP-3D-SEISMIC-DATA

NLOG
Dutch Oil and Gas portal

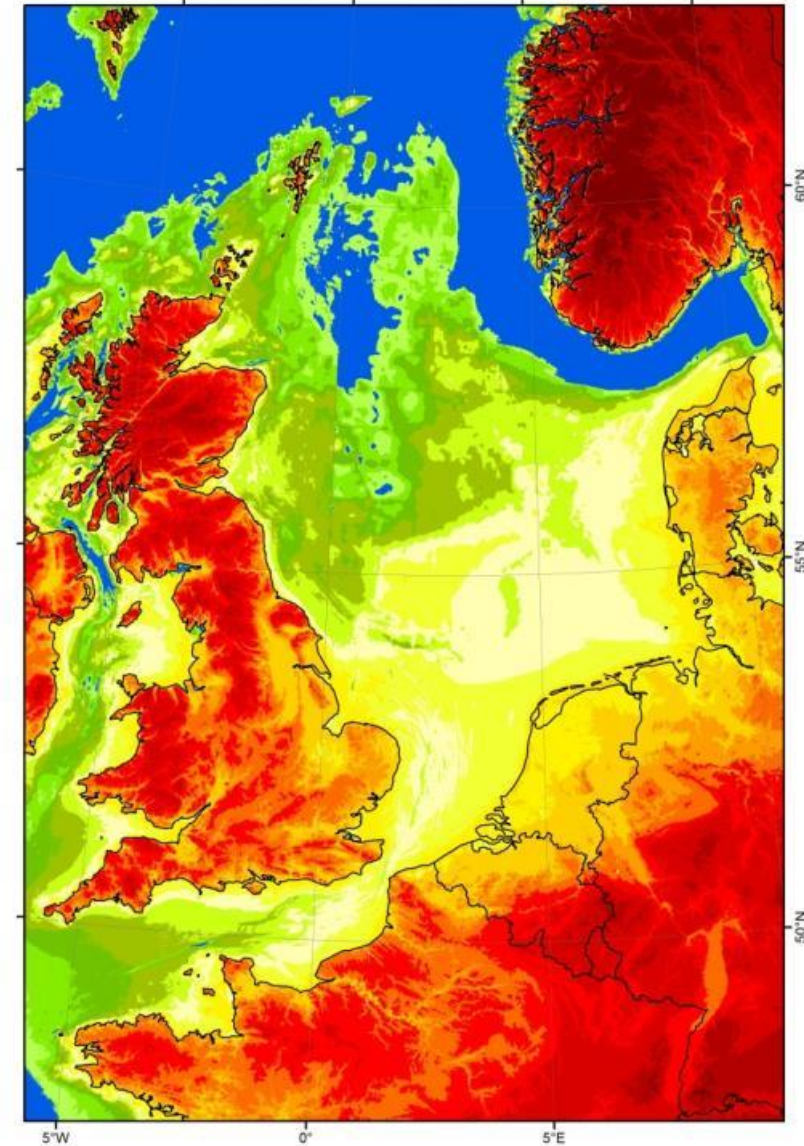
[Home](#) [Data](#) [Activities](#) [Legislation and procedures](#) [Licences](#) [Mining effects](#) [Publications](#)



› **ONCE, THE NORTH SEA WAS DRY**
WHERE WERE CHANNELS, LAKES, RIDGES ...?

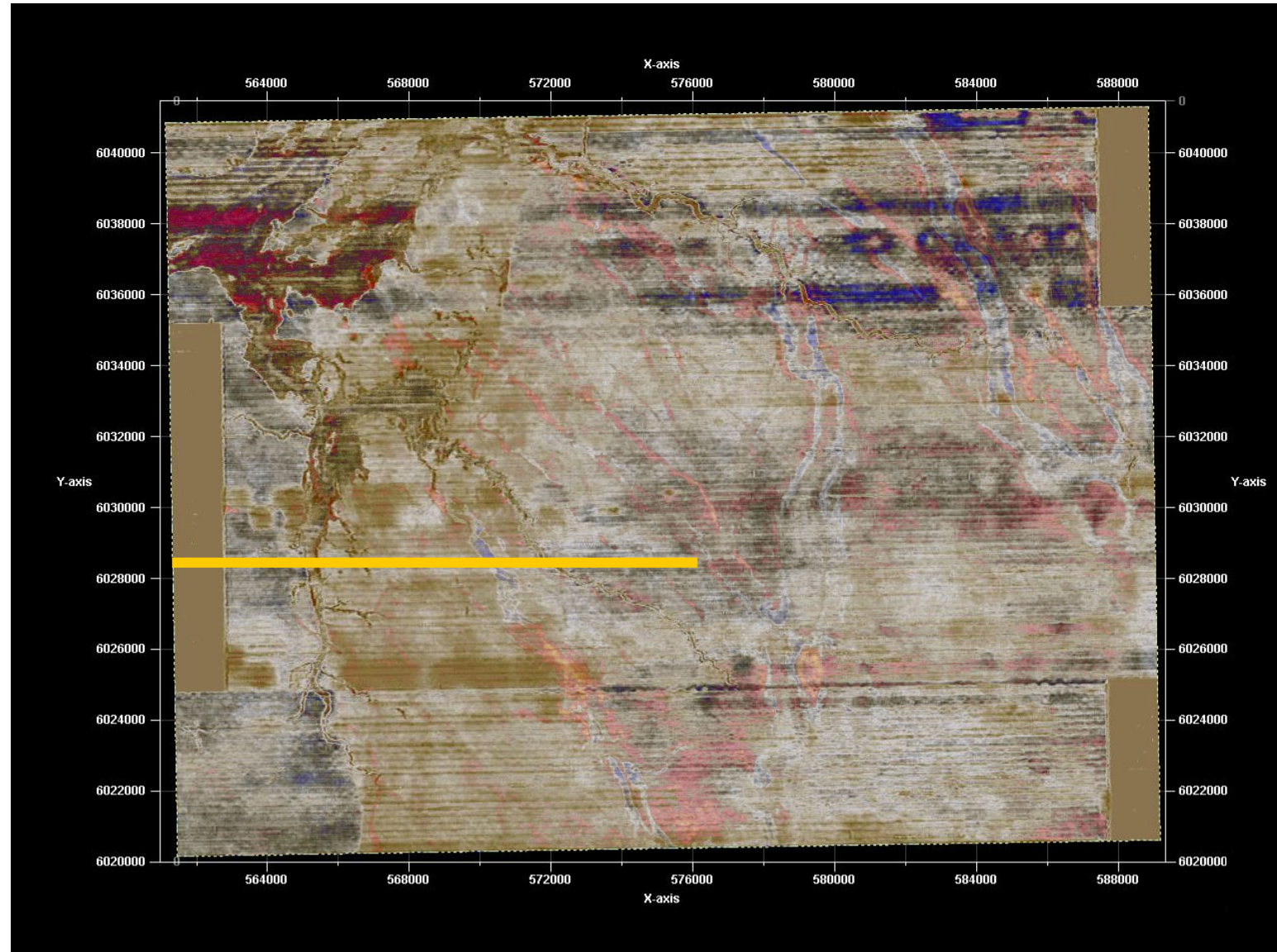
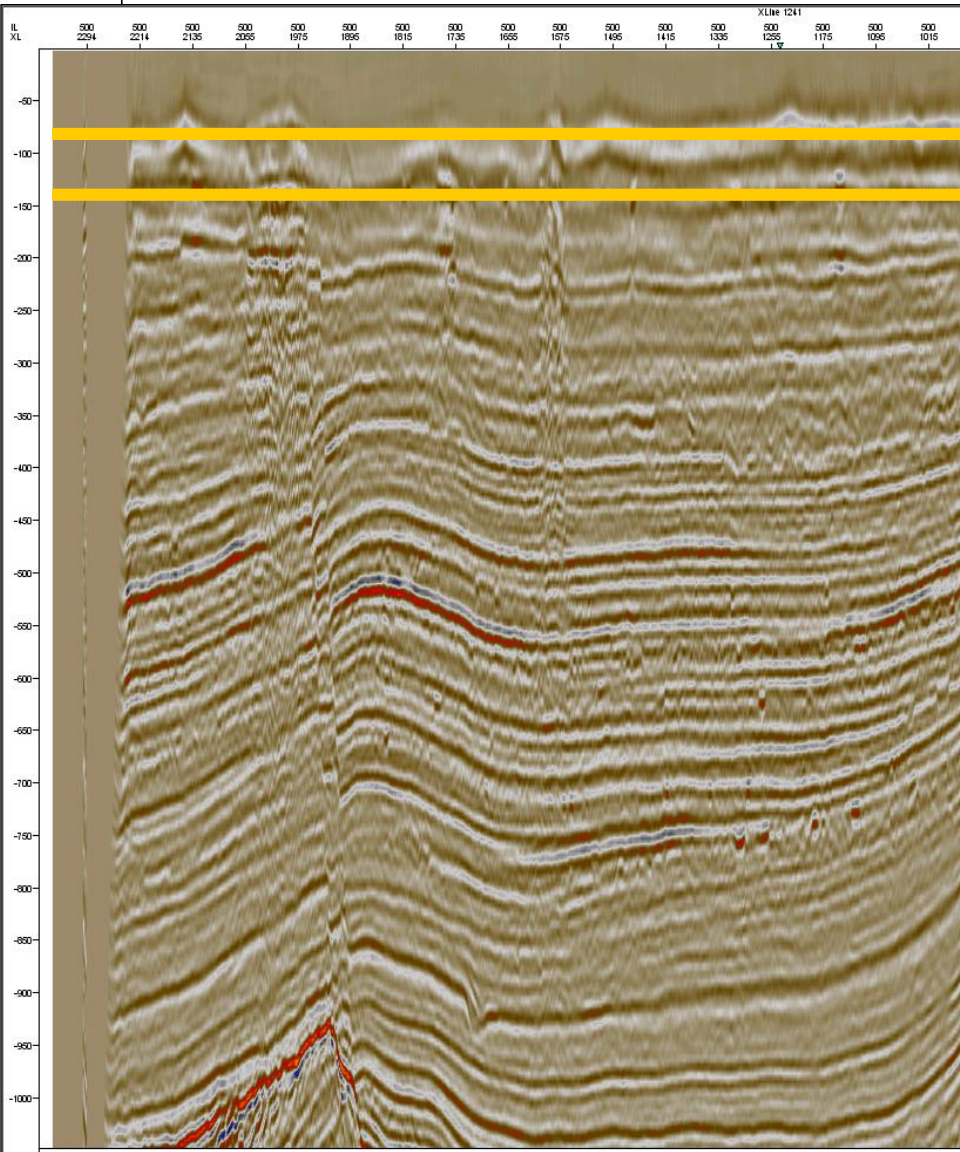


Image: www.dandebat.dk



› RICH RESOURCE OF 3D DATA

COLLECT ONCE, USE MANY TIMES: SHALLOW TIME SLICES (HORIZONTAL SECTIONS)



› GLACIAL LANDSCAPES: YOU CAN SEE VERY DEEP VALLEYS

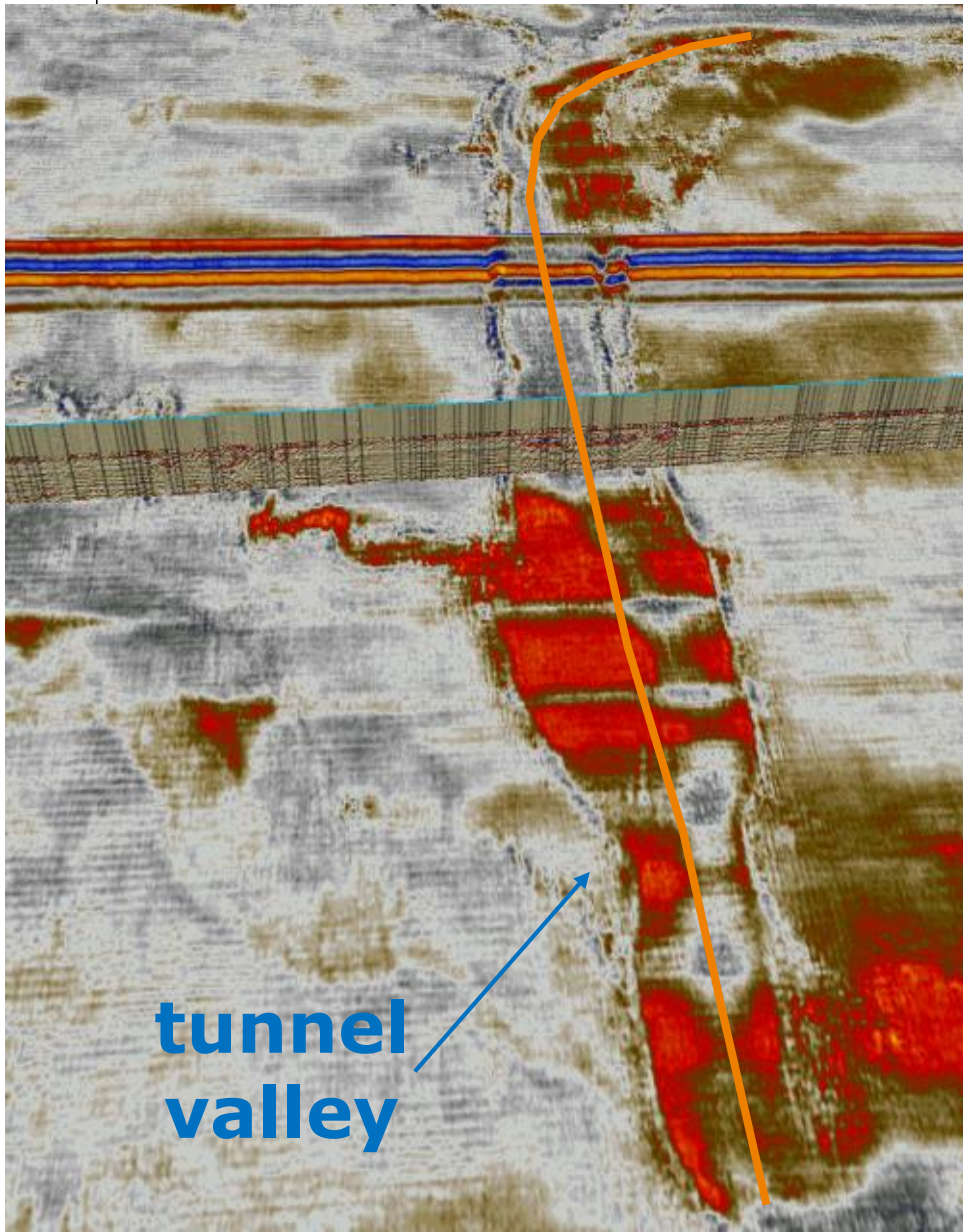
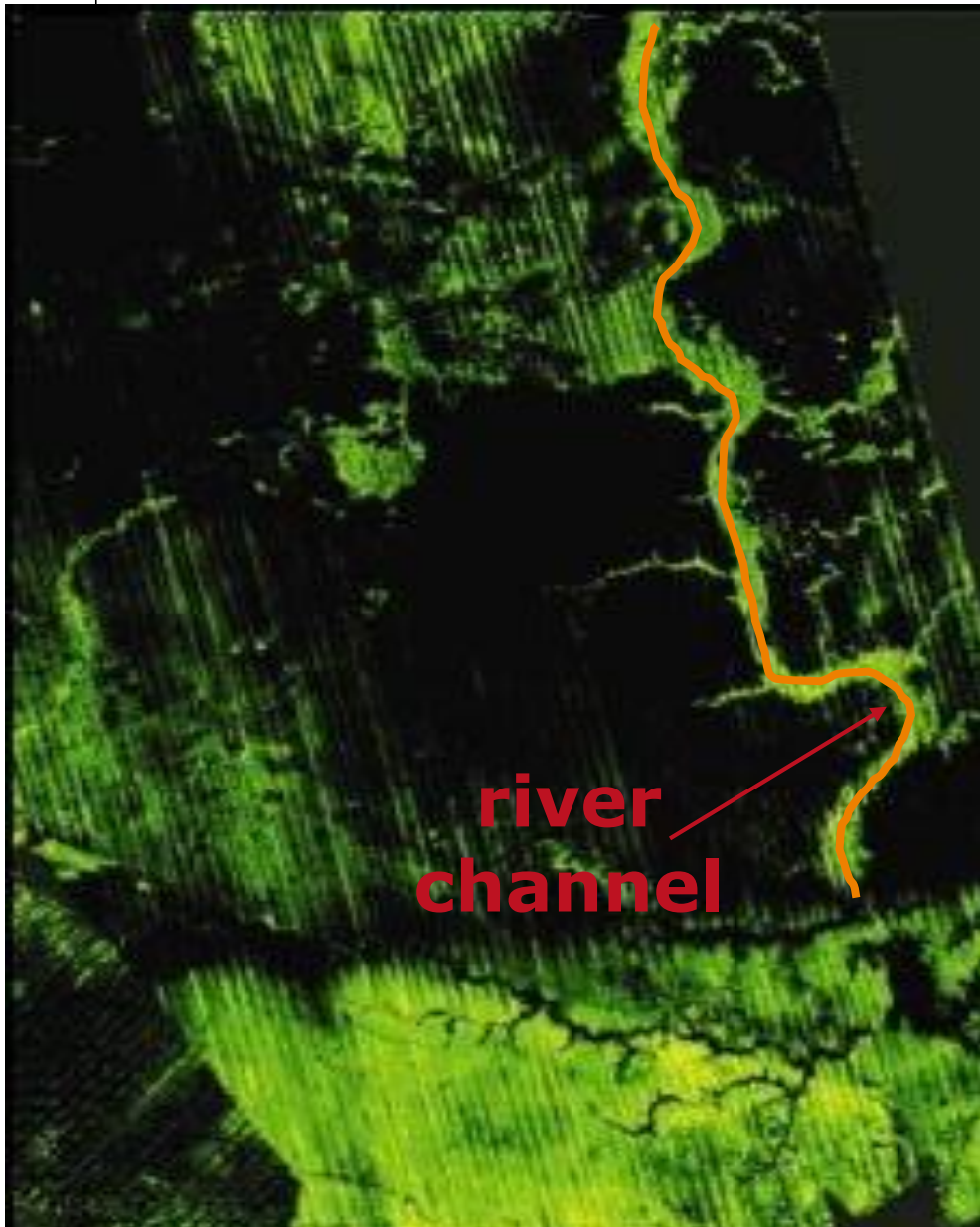
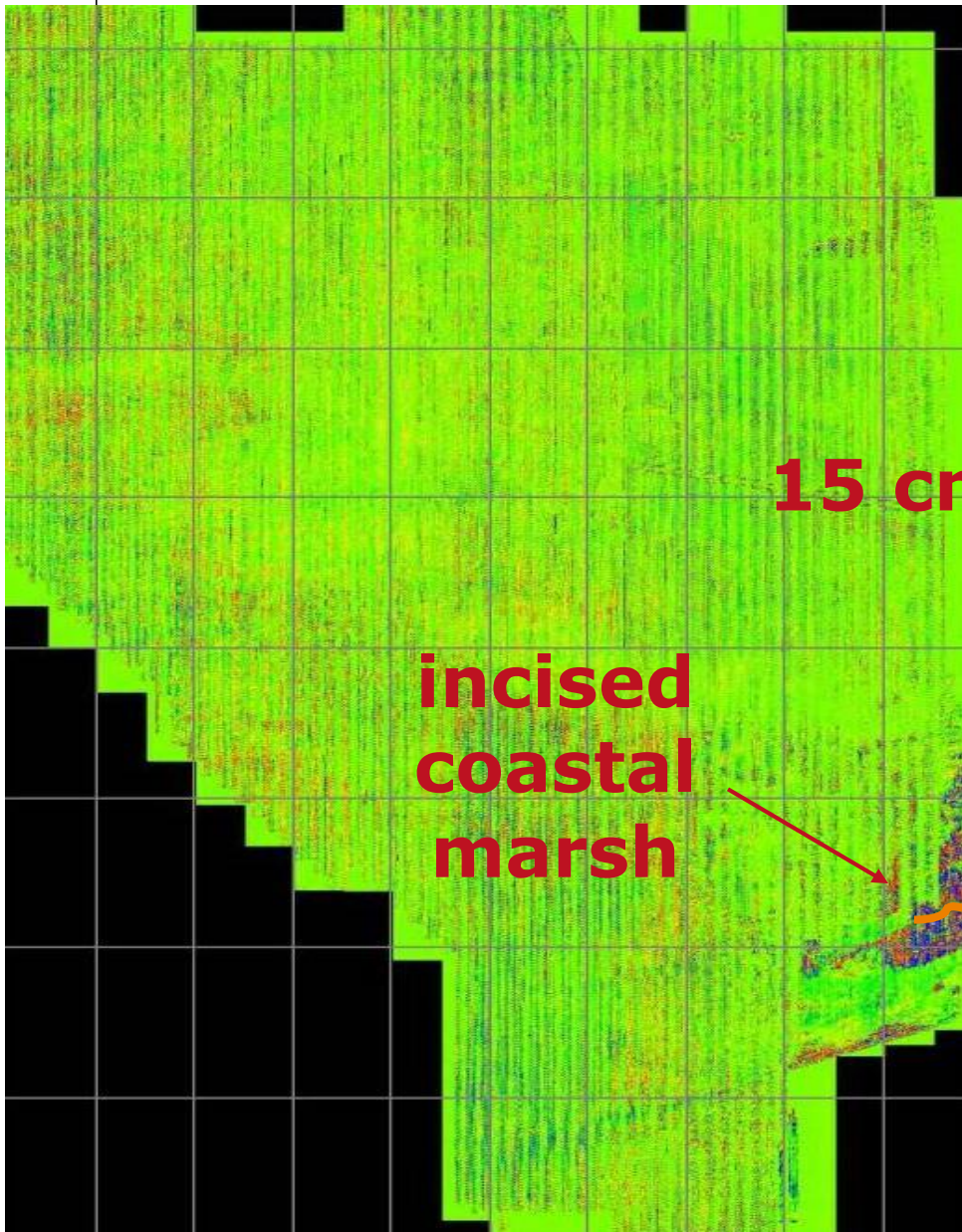


Image: www.dec.ny.gov

› RIVERINE LANDSCAPES: YOU CAN SEE VERY CURVY FILLS



› COASTAL LANDSCAPES: YOU CAN SEE VERY THIN PEAT LAYERS



15 cm

incised
coastal
marsh





› **THANK YOU FOR
YOUR TIME**

TNO innovation
for life

more information: [syitze.vanheteren@tno.nl](mailto:sytze.vanheteren@tno.nl)