

FROM SAMPLES TO SEABED-SEDIMENT MAP

WILLEM DABEKAUSSEN

TNO – GEOLOGICAL SURVEY OF THE NETHERLANDS

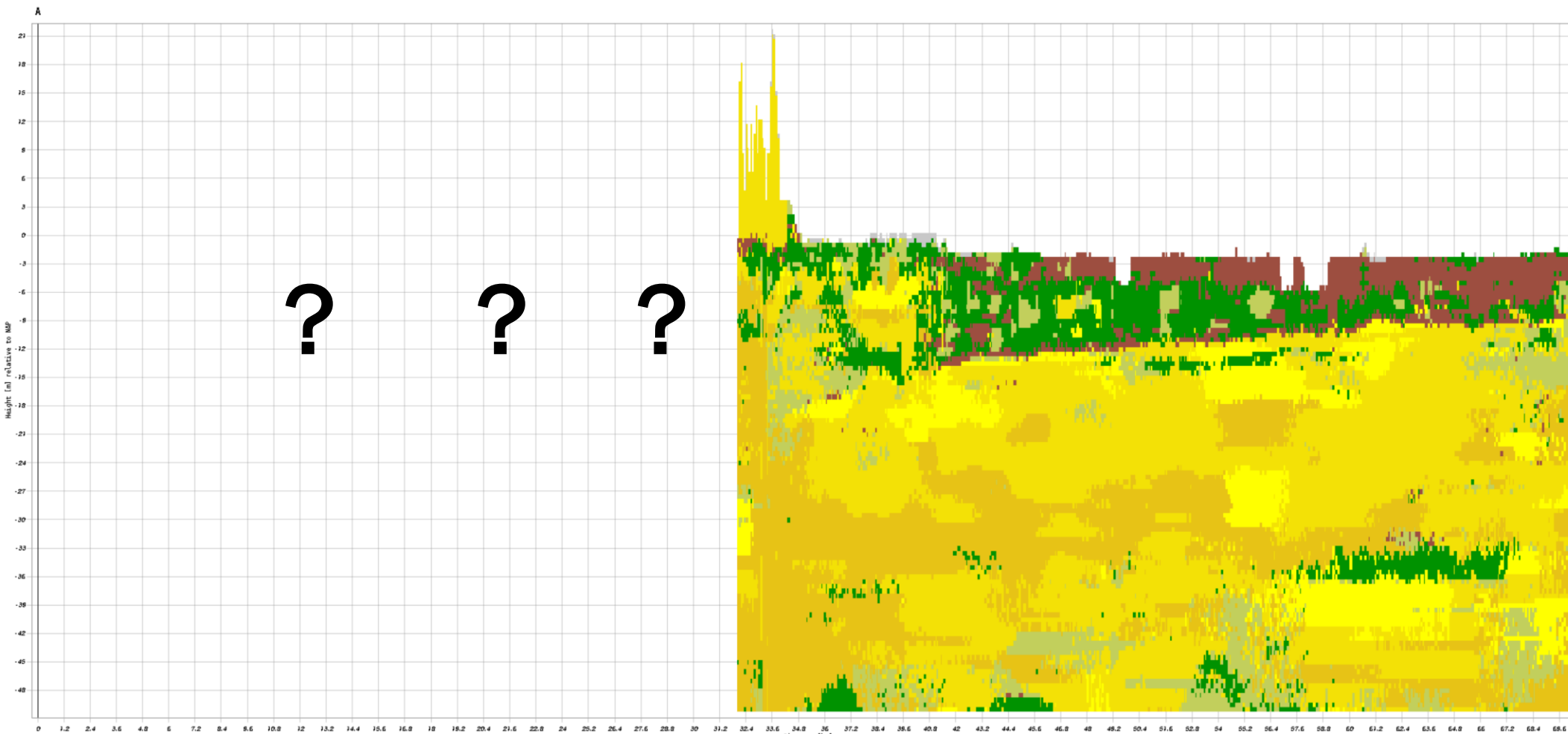
MODELS DINOLOKET DATABASE

NO OFFSHORE ... YET; CHALLENGE: MARINE DATA ARE SCARCER THAN LAND DATA

DINOloket
Data and Information on the Dutch Subsurface

[Subsurface data](#) [Subsurface models](#) [Feedback](#)

Cross-section BRO GeoTOP v1.4.1



BRO GeoTOP v1.4.1

Lithoclass

a

v

k

kz

zf

zm

zg

g

she

Height relative to NAP

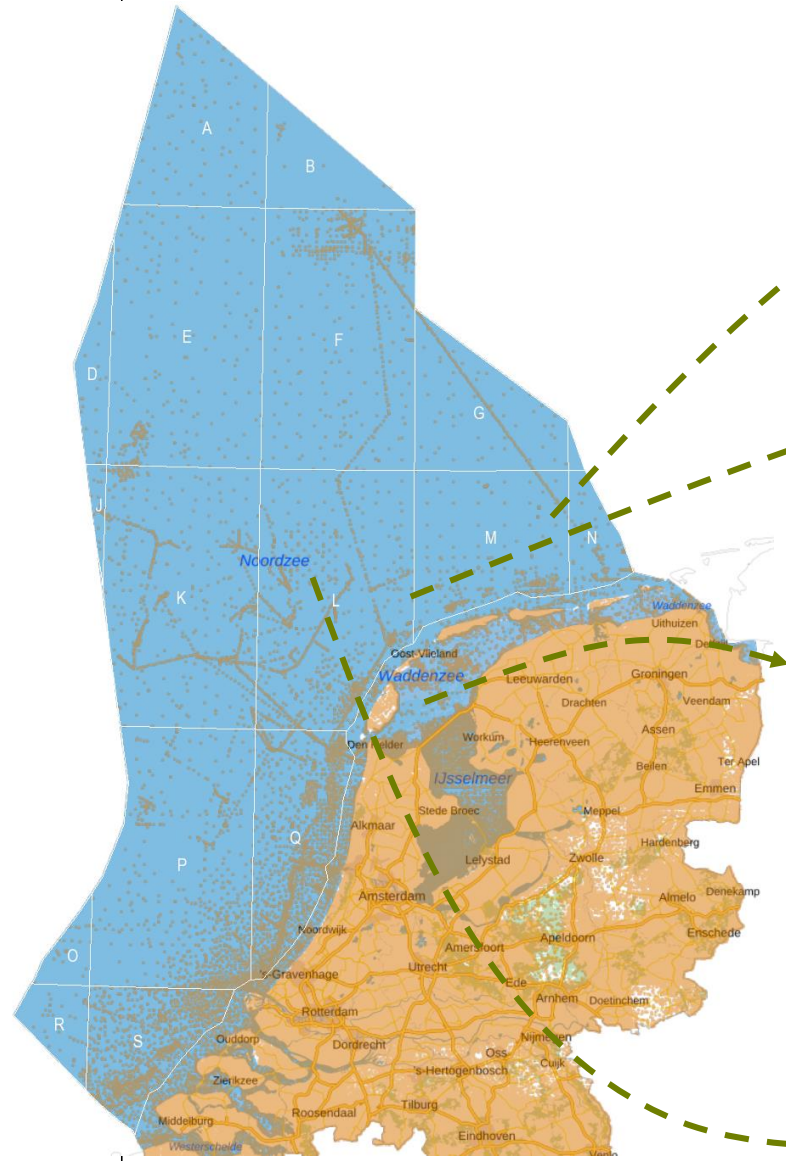
Between -50 and 21 m

most probable lithoclass

Save as PDF

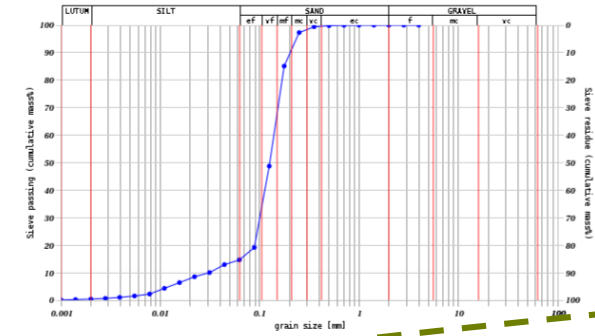
DATA IN DINOLOKET DATABASE

VARIABLE DATA TYPE/QUALITY/DENSITY

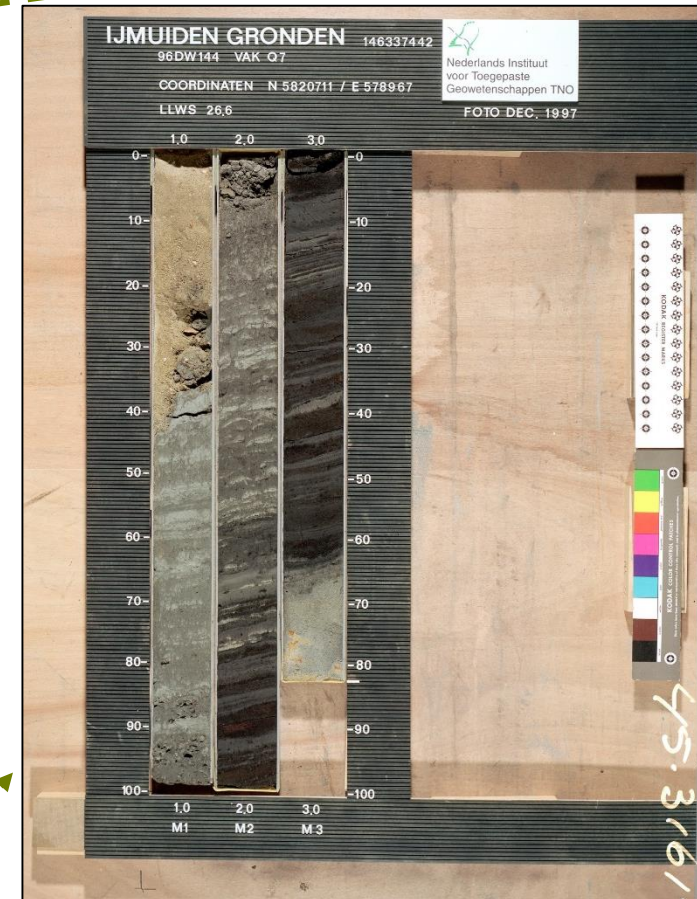


Grain-size distribution

Identification: B01D0456
Sample identification: K1800-00-5597
Coordinates: 654562, 5923767 (WGS84)
Sample: from 0.00 m to 0.10 m rel. to Seafloor

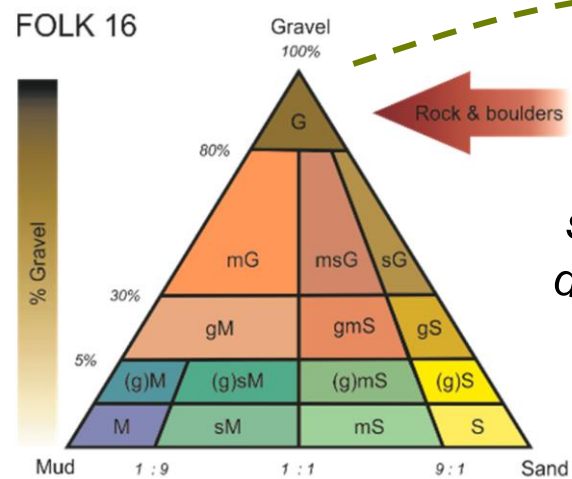
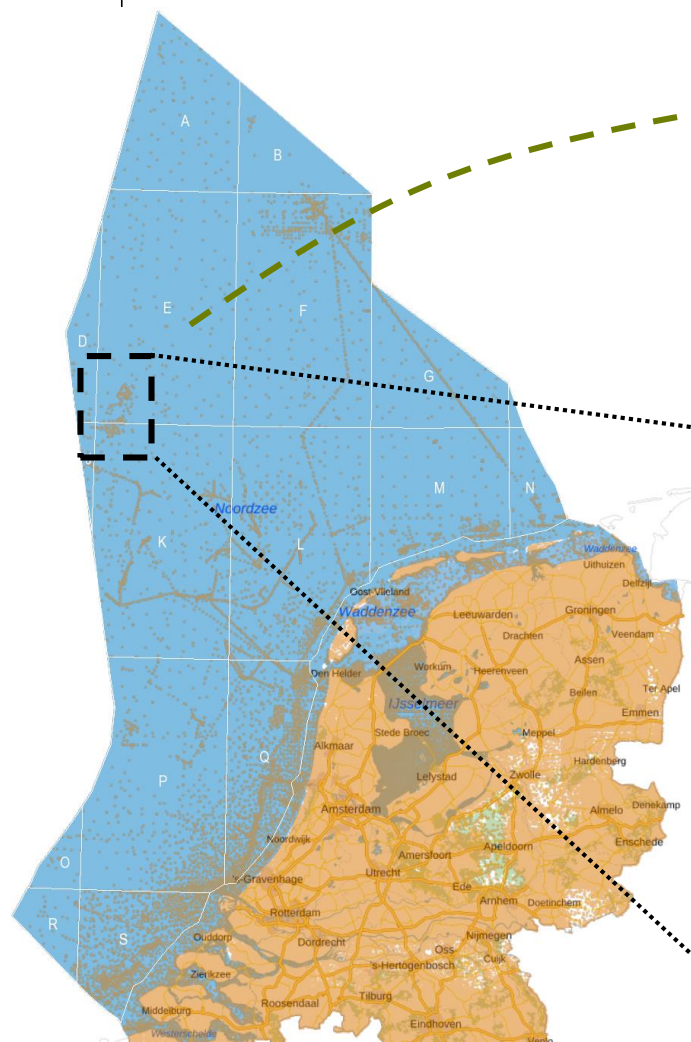


Nederlands Instituut voor Toegepaste Geowetenschappen TNO				BR020001
NITG-Boornummer	BR020001	Coördinatenstelsel	World Geodetic System 1984 - Universele Transversale Mercator projectie - zone 31	
X-coördinaat	471394	Bepaling lokatie	Onbekend	
Y-coördinaat	5753645	Beschrijvingsmethode	Vertrouwelijk	
Maatveld (m tov NAP)		Vertrouwelijkheid	01-01-2099	
Datum boring	12-12-1968	Geheim tot	R02-00001	
Plaatsnaam		Werknummer	R2,1	
Provincie				
Kaartblad				
Soort boring				
Einddiepte (m)	2.50			
Uitvoerder				
Boormethode	Steekboring			
Opmerkingen				
Lithologie				
Beschrijver lagen				
Organisatie beschrijver				
Nat/droog	Onbekend			
Laagbeschrijving				
Boven	Onder	Grondsoort	Omschrijving	M63 LU SI ZA GR OR CA
0.00	0.10	zand	licht-geel	3
		oude omschr.	GRONDSOORT: Z; GRINDINH: VEEL GRIND W.O. VUURSTEEN KWARTSIET, 2-3CM DIAM., FORM: BH; STRAT: HOL; KLEUR: GEEL/BLOND; CA: CA4; KORRELGR: 210-300; INH: AFGEROND MATIG GROF	
0.10	2.50	zand	grijs-zwart, Sch.perc (met.): 30, Opm.: VEEL SCHELPELEN NOG IN LEVENSTAND, SLECHT GESORTEERD	3
		oude omschr.	GRONDSOORT: Z; CA: CA4; KLEUR: GRIJS/ZWART; STRAT: PLE; SCHELPELEN: ZEER VEEL FINE SCHELPELFRAGMENTEN EN SCHELPELEN; GRINDINH: EEN ENKEL GRINDJE W.O. VUURSTEEN, ROLSTEEN, 3CM DIAM OP 25CM DIEPTE; SLBINH: SL2; FORM: WK; SCHELPEL: PERC: 30; INH: MATIG GROF MET GROVERE KORRELS	

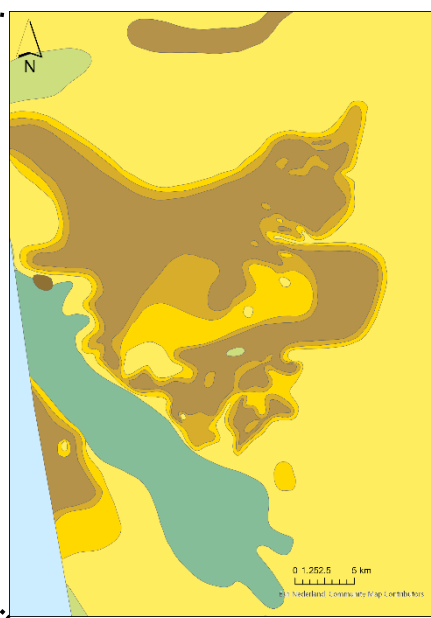


SEABED SEDIMENT MAPS

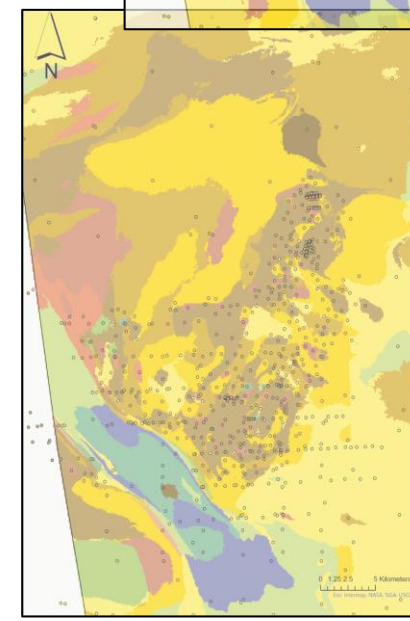
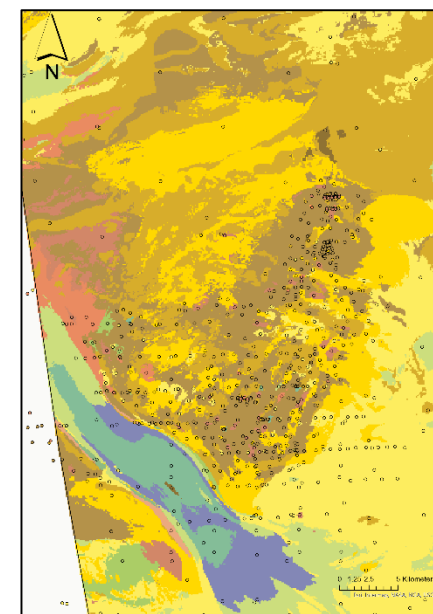
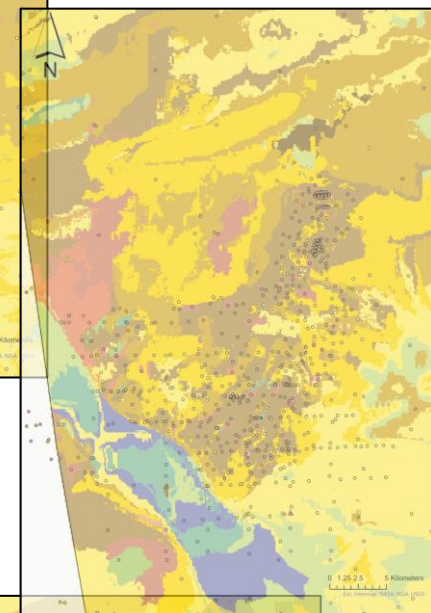
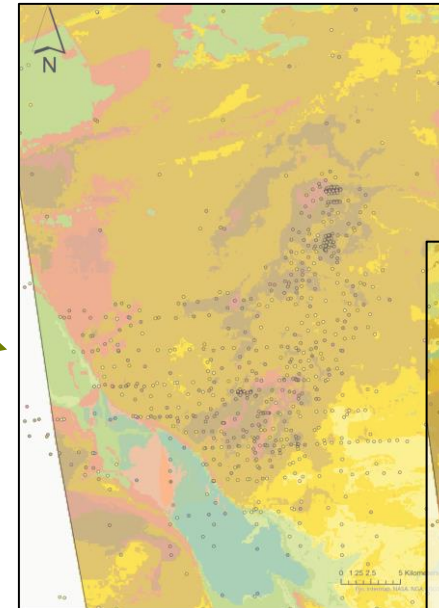
FROM MANUAL TO DATA-DRIVEN MAPPING



sneak preview:
data-driven maps



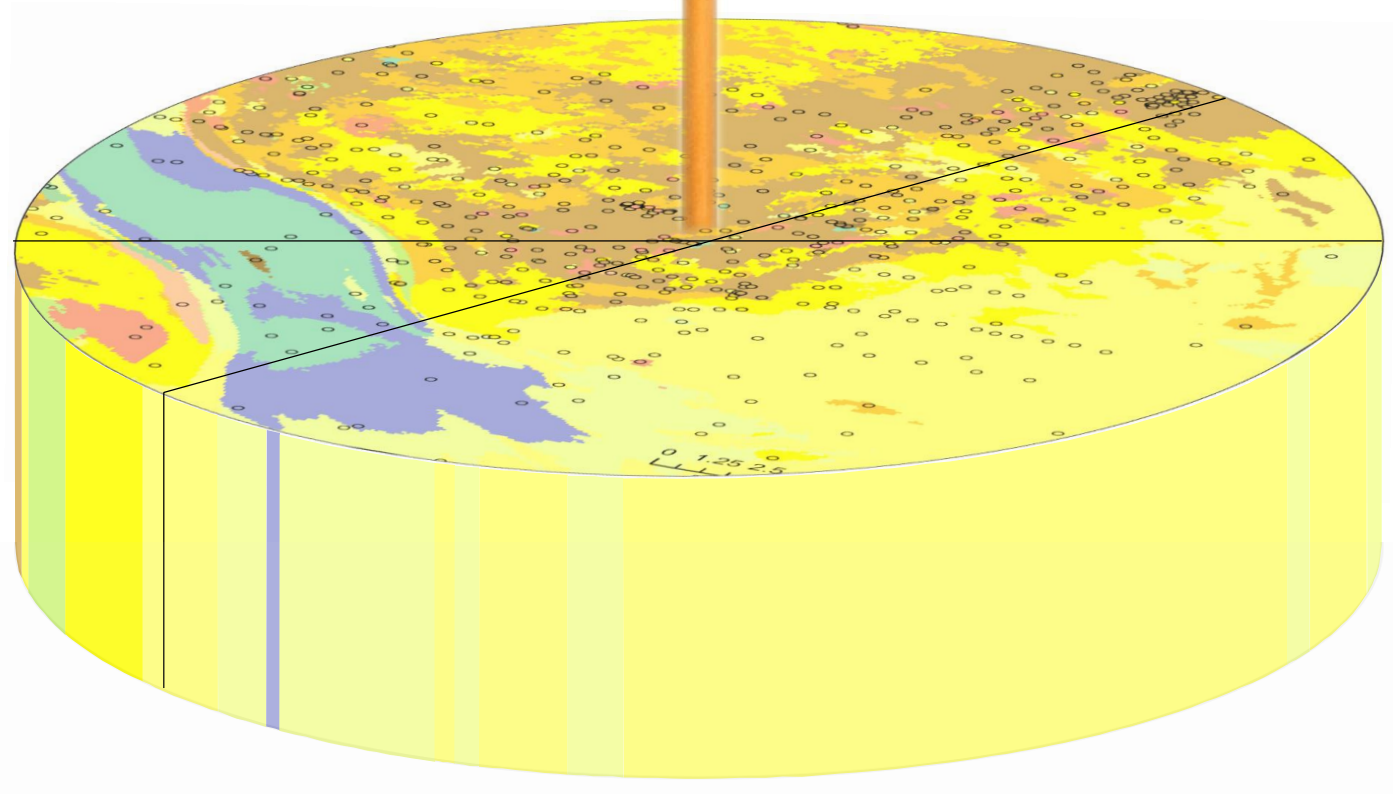
'90s: manual



› SEABED-SEDIMENT MAPS

DATA-DRIVEN MAPPING

- › Flexible output tuned to user demands
- › Fast and easy updates
- › A living map, with improvements relying on:
 - › Use of ever-better interpolation techniques
 - › Influx of new data
- › Want to join the party? Supply your grain-size data!





› **THANK YOU FOR
YOUR TIME**

TNO innovation
for life

more information: willem.dabekaussen@tno.nl