



Rijkswaterstaat
Ministry of Infrastructure
and Water Management



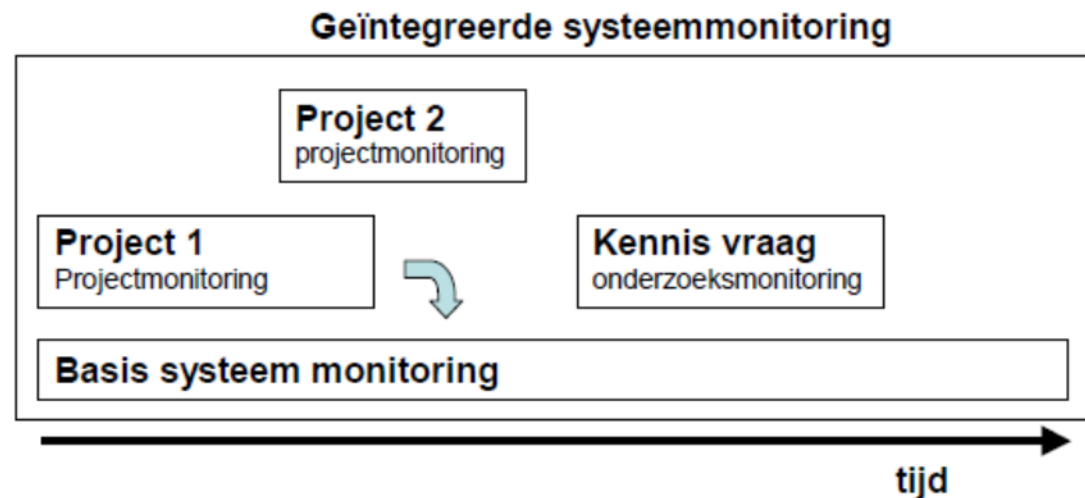
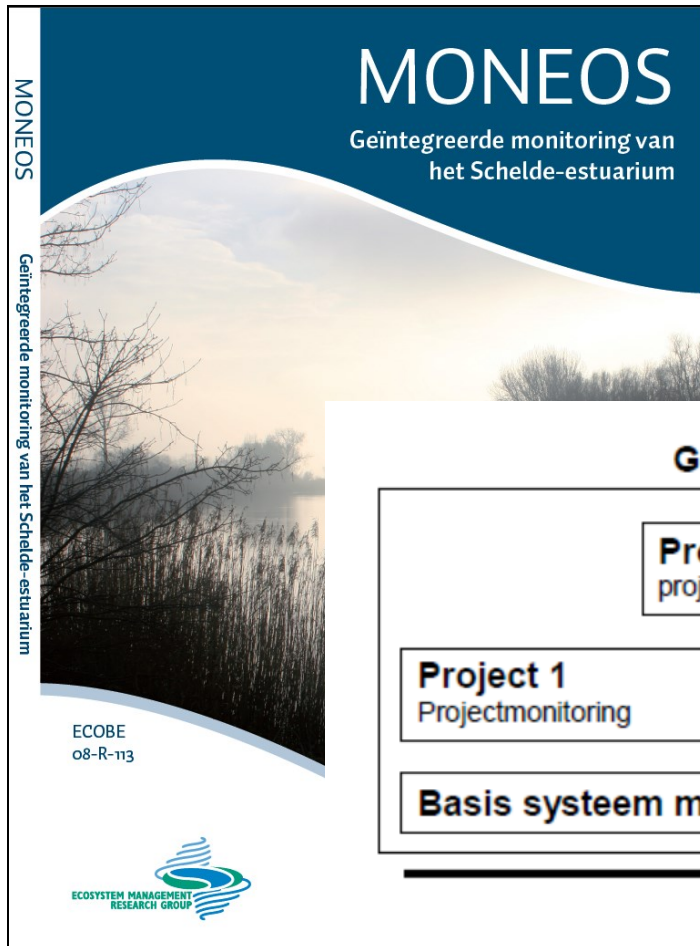
(Current) measurements in the Western Scheldt

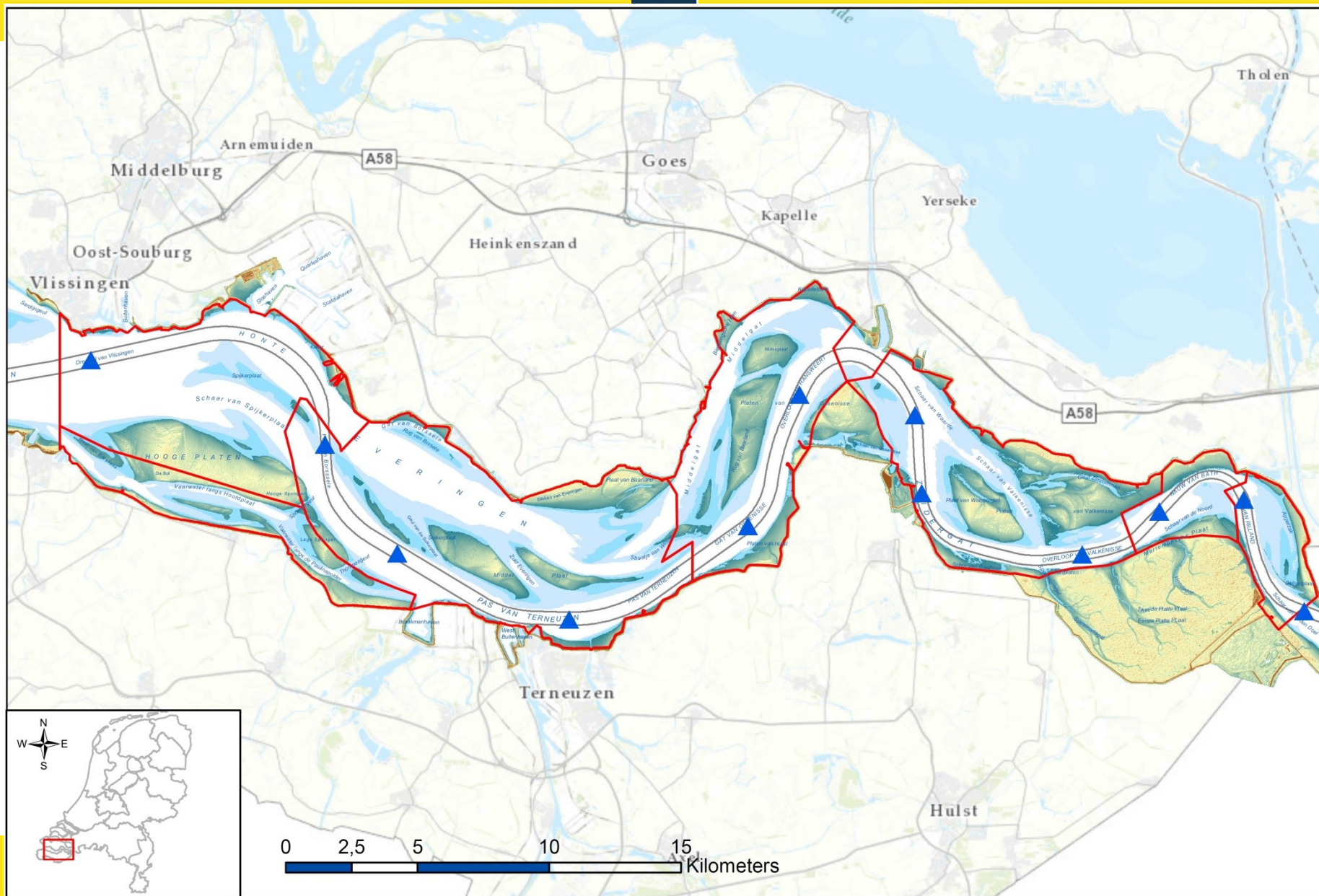
A short introduction ...

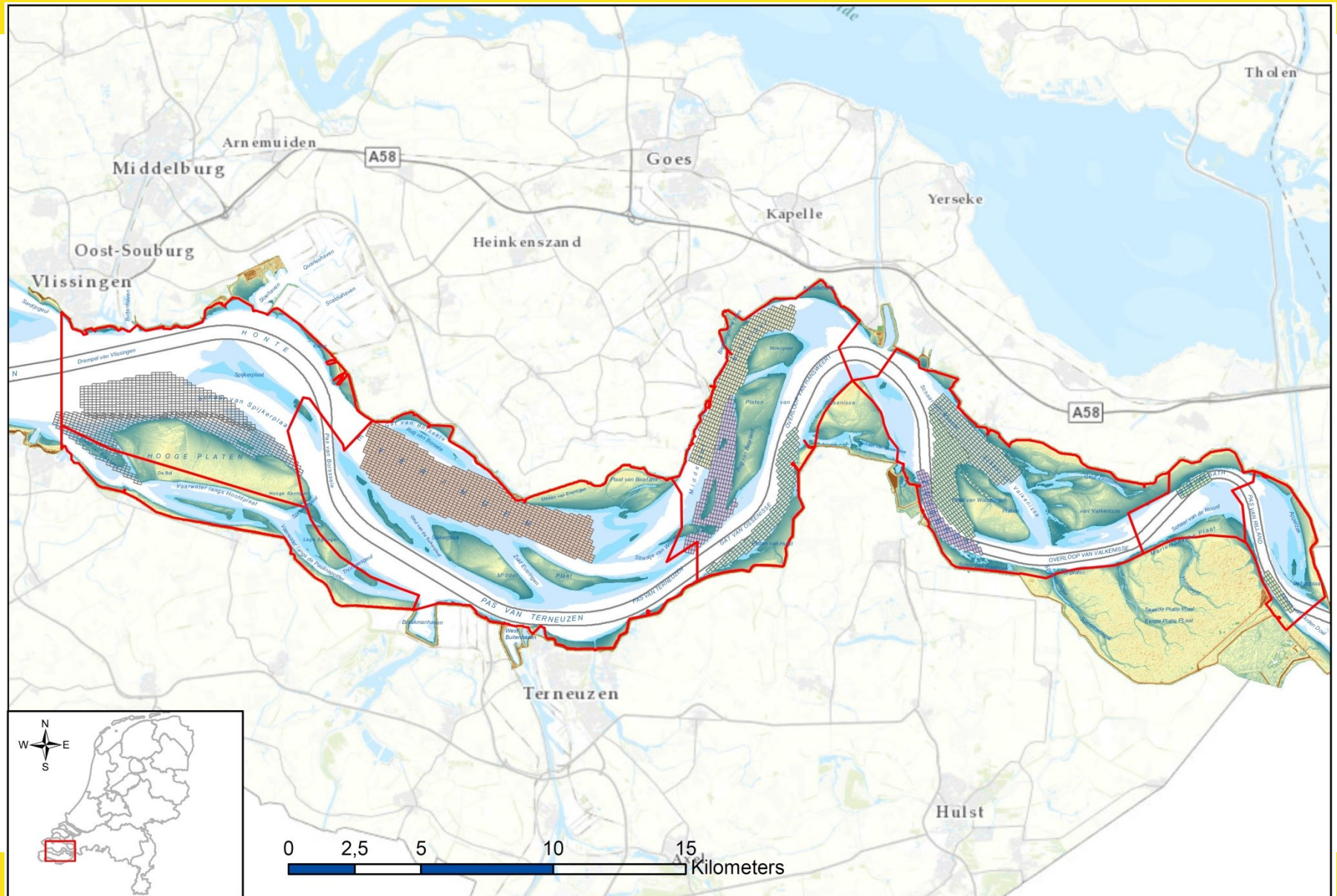
Marco Schrijver (RWS ZD)
October 29th 2018

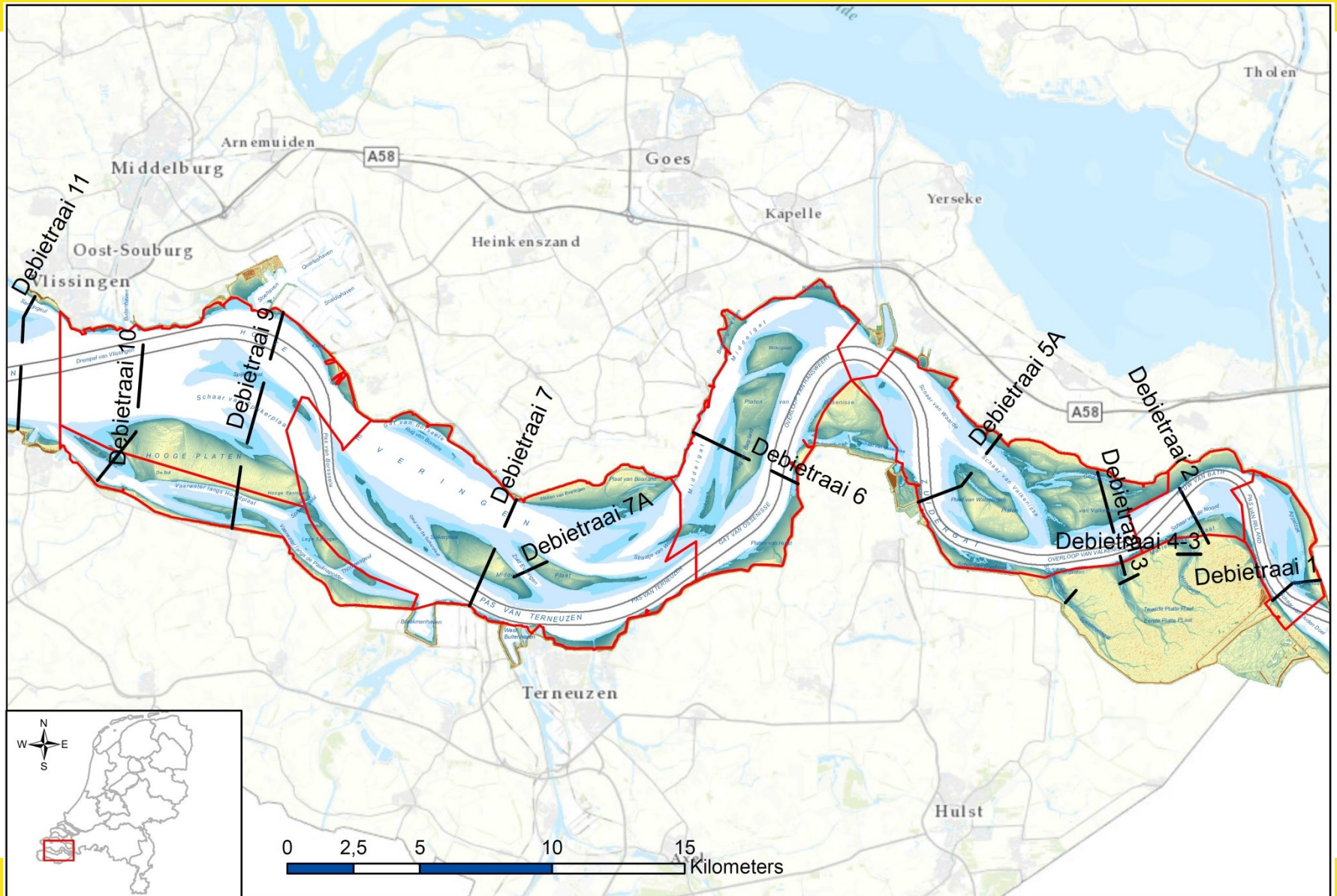


Defining the monitoring: reports



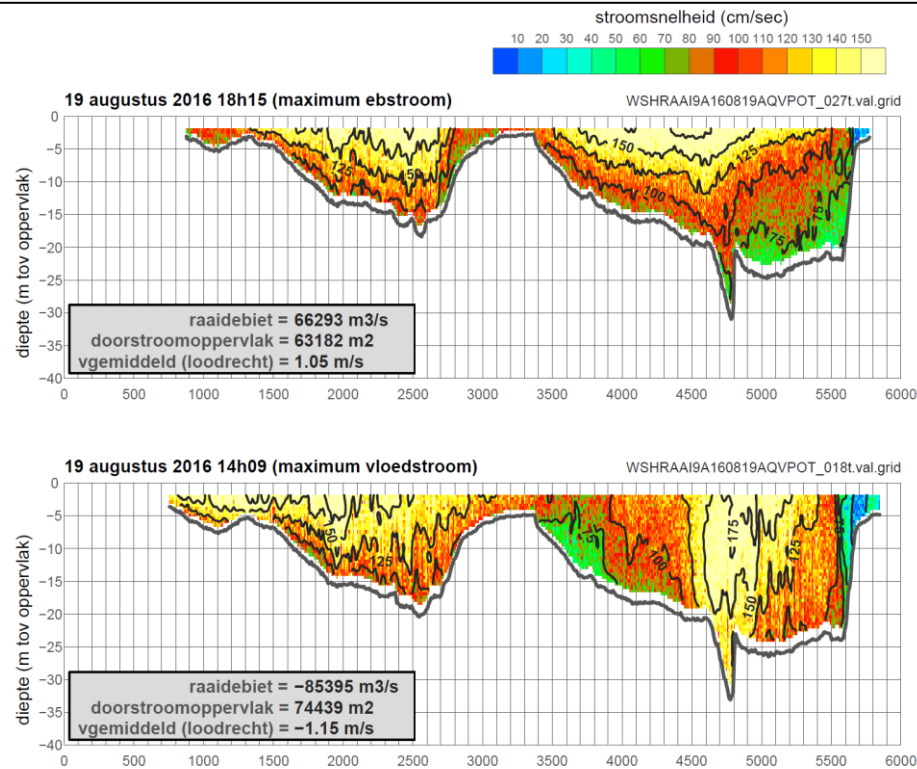




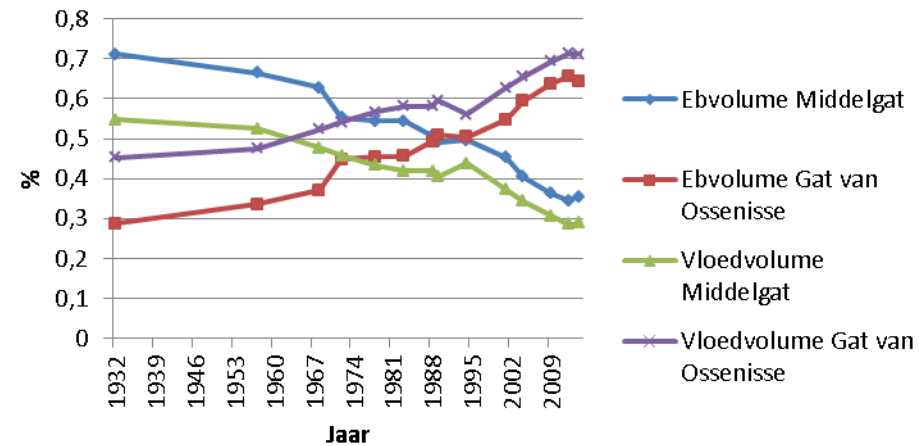




Data presentation



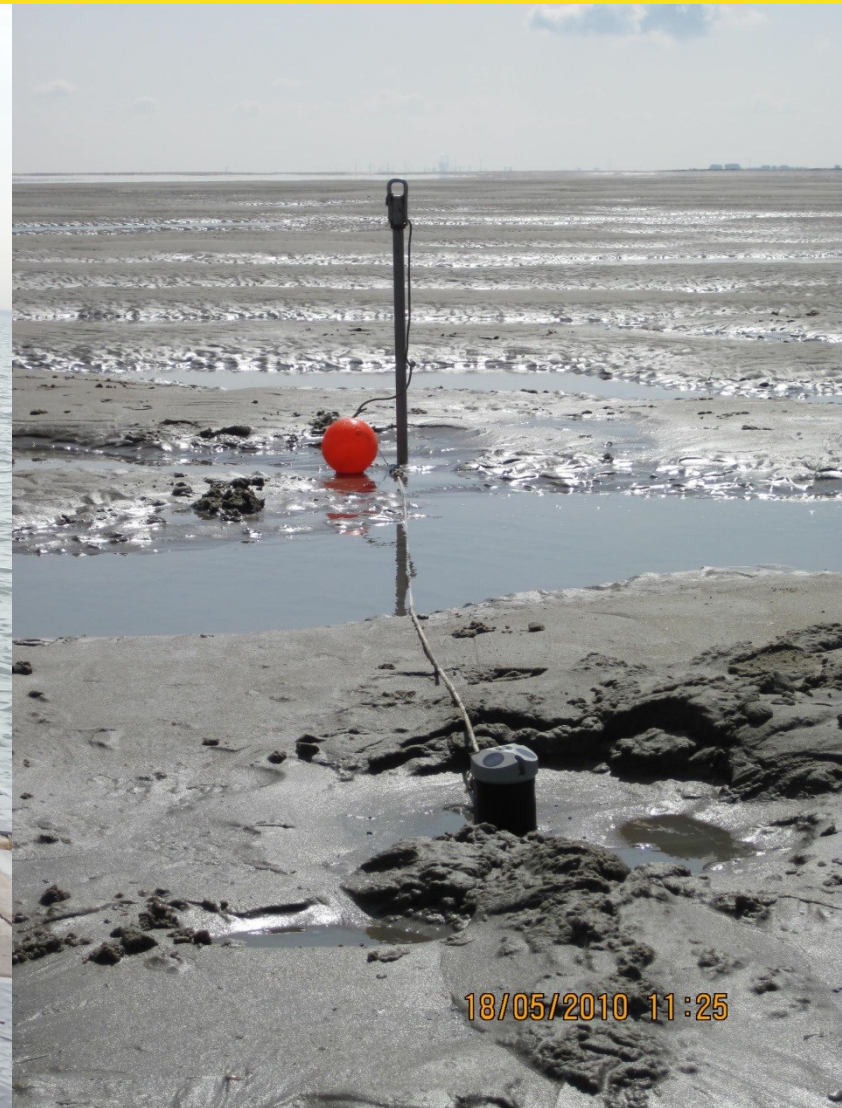
Volumeverdeling



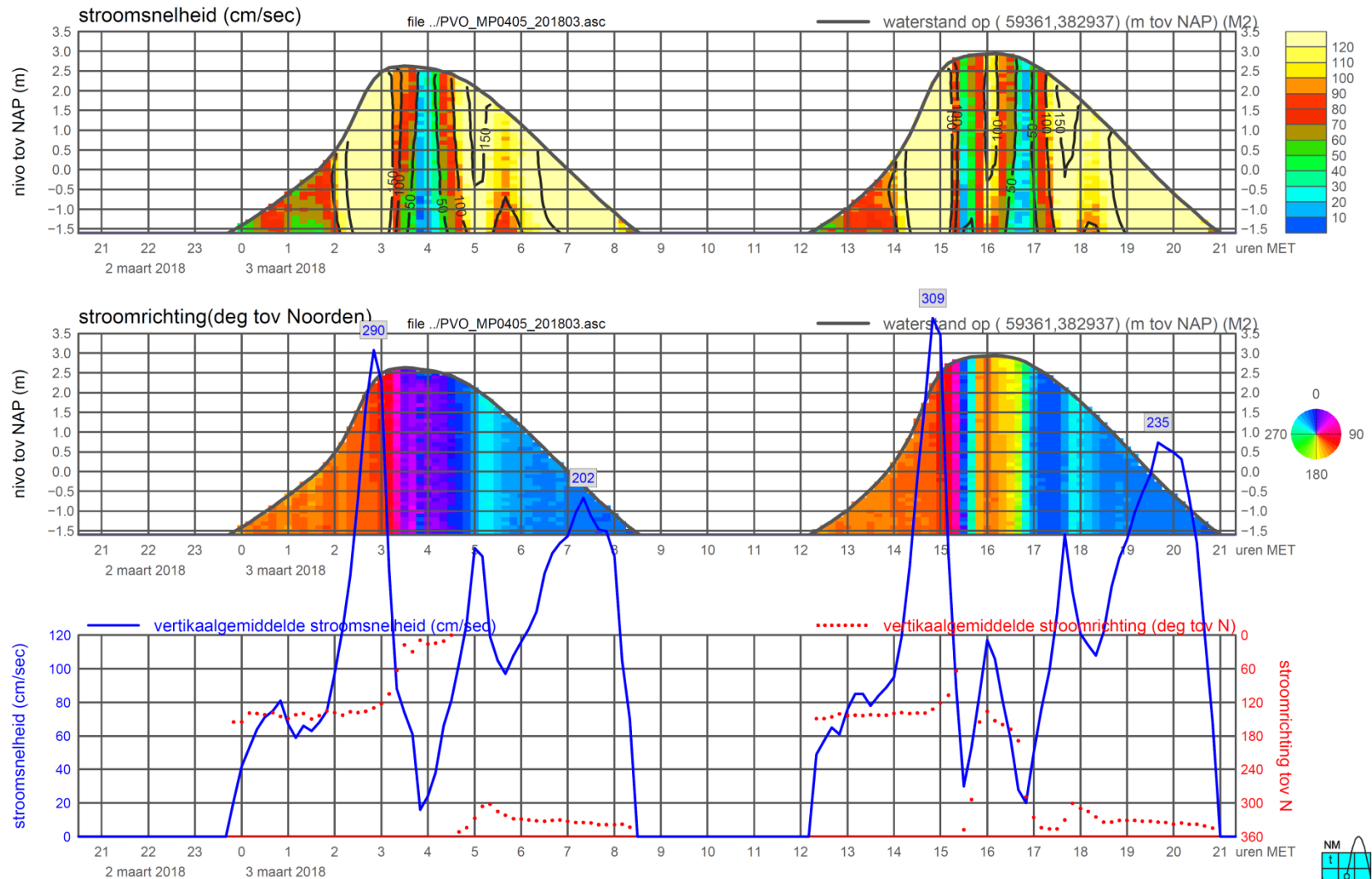


How?

- Current measurements are made in several locations on a predefined transect
- RDI ADCP upward looking, blanking distance 0,5 m, cell size 0,5 m,
• instrument height: 0,6 m above bottom.
- Nortek AquaVison: upward looking, blanking distance 10 cm, cell size 10 cm, instrument height depends on dynamics in the location. Height is measured with RTK direct after placement.
- Data collected at 10 minute interval.



meetpunt PVO_MP0405_201803 (x=59361 , y=382937 ,bodem=NAP -1.60 m sensor=NAP -1.71 m)



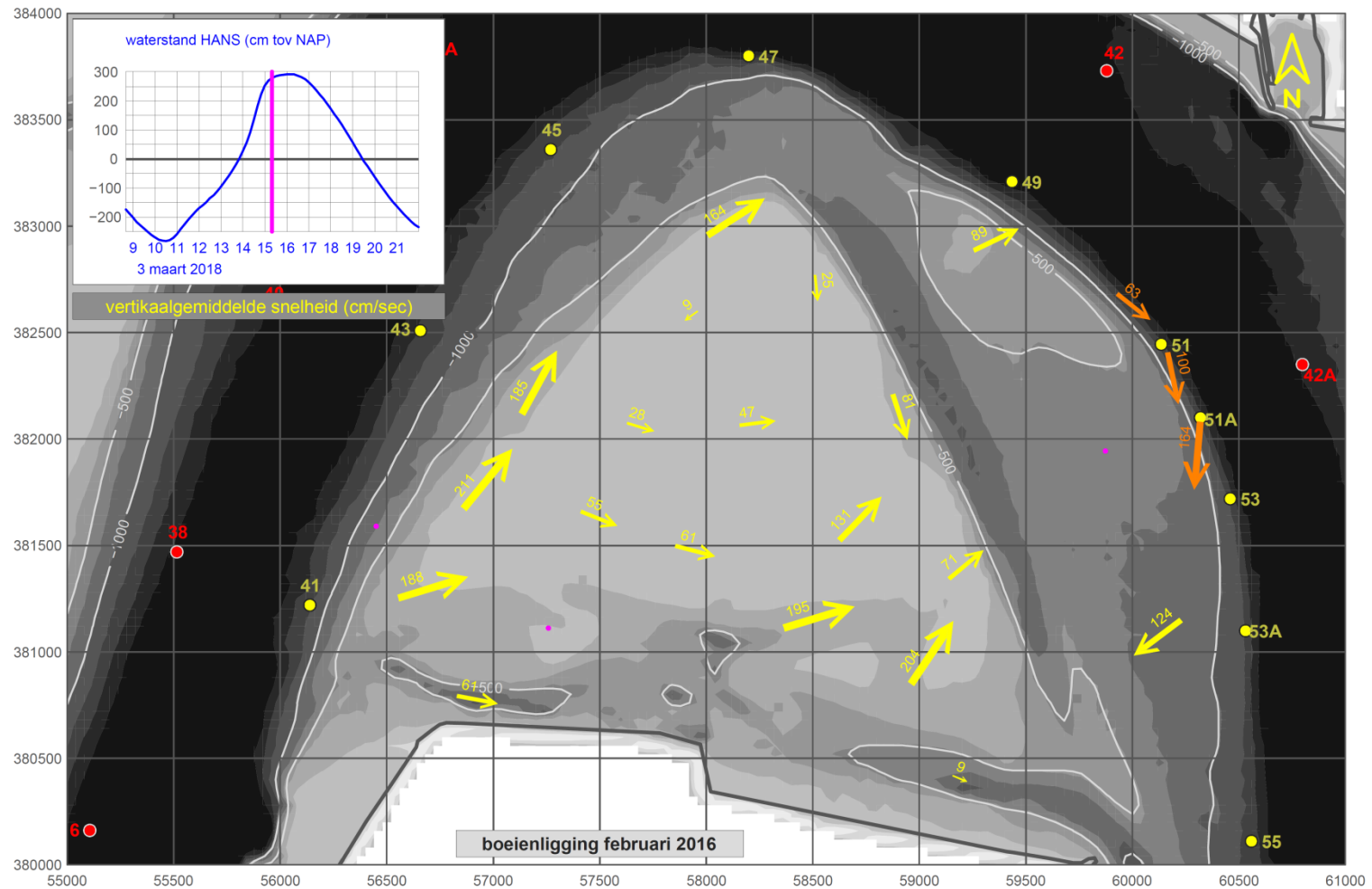
20180410 11h05 created by map2009 HPOST2EPS /home/tow/klerek/project/plaatrand/PVO/vr/adcpvastUP.inp

RWS Zee en Delta



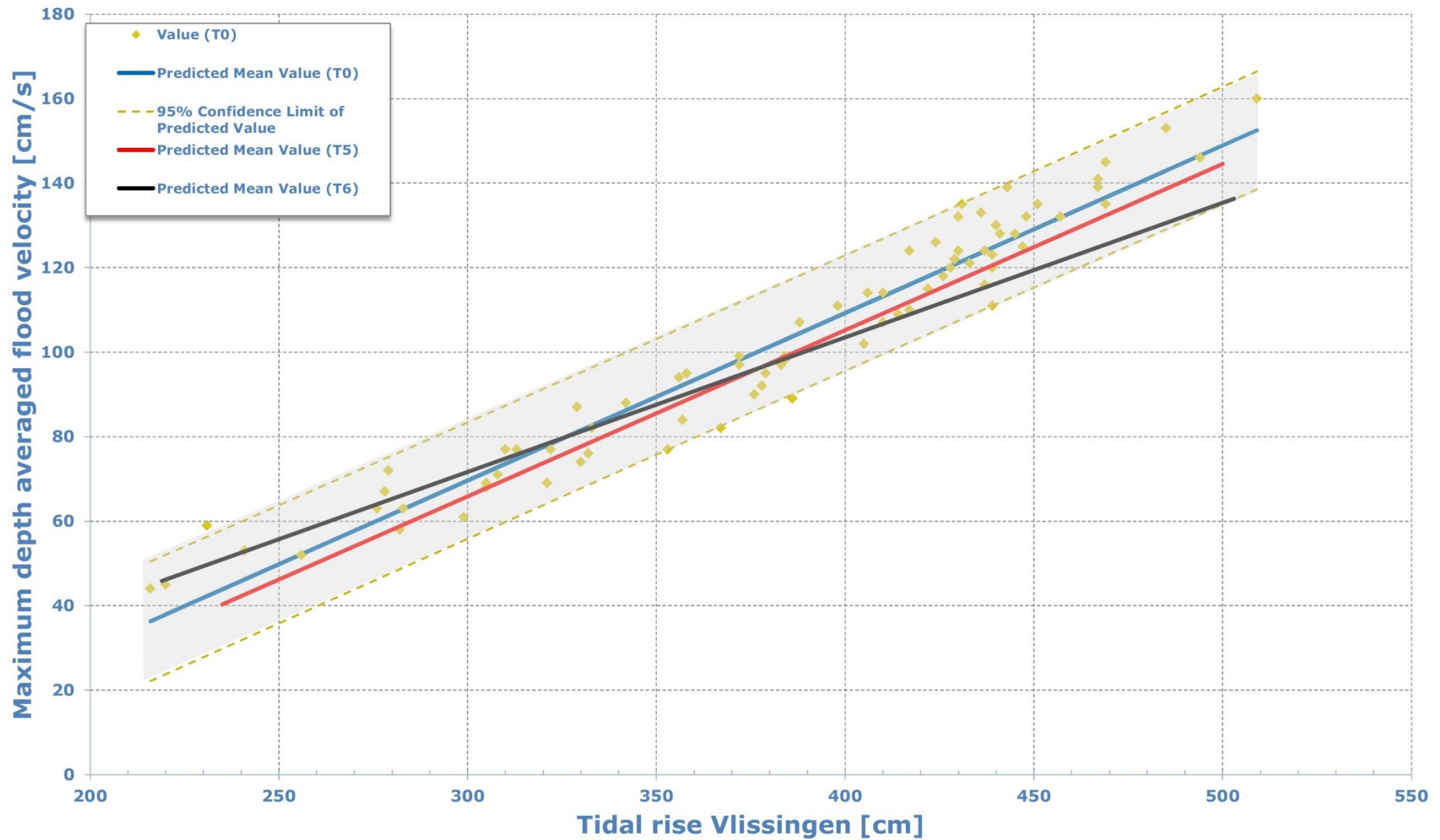


Plaat van Ossenisse 3 maart 2018 15h20 bodem 2017





HPN_MP0205







9 11 2010