

LONG TERM DEVELOPMENT OF SHOALS

Jelmer Cleveringa



Long term development of shoals

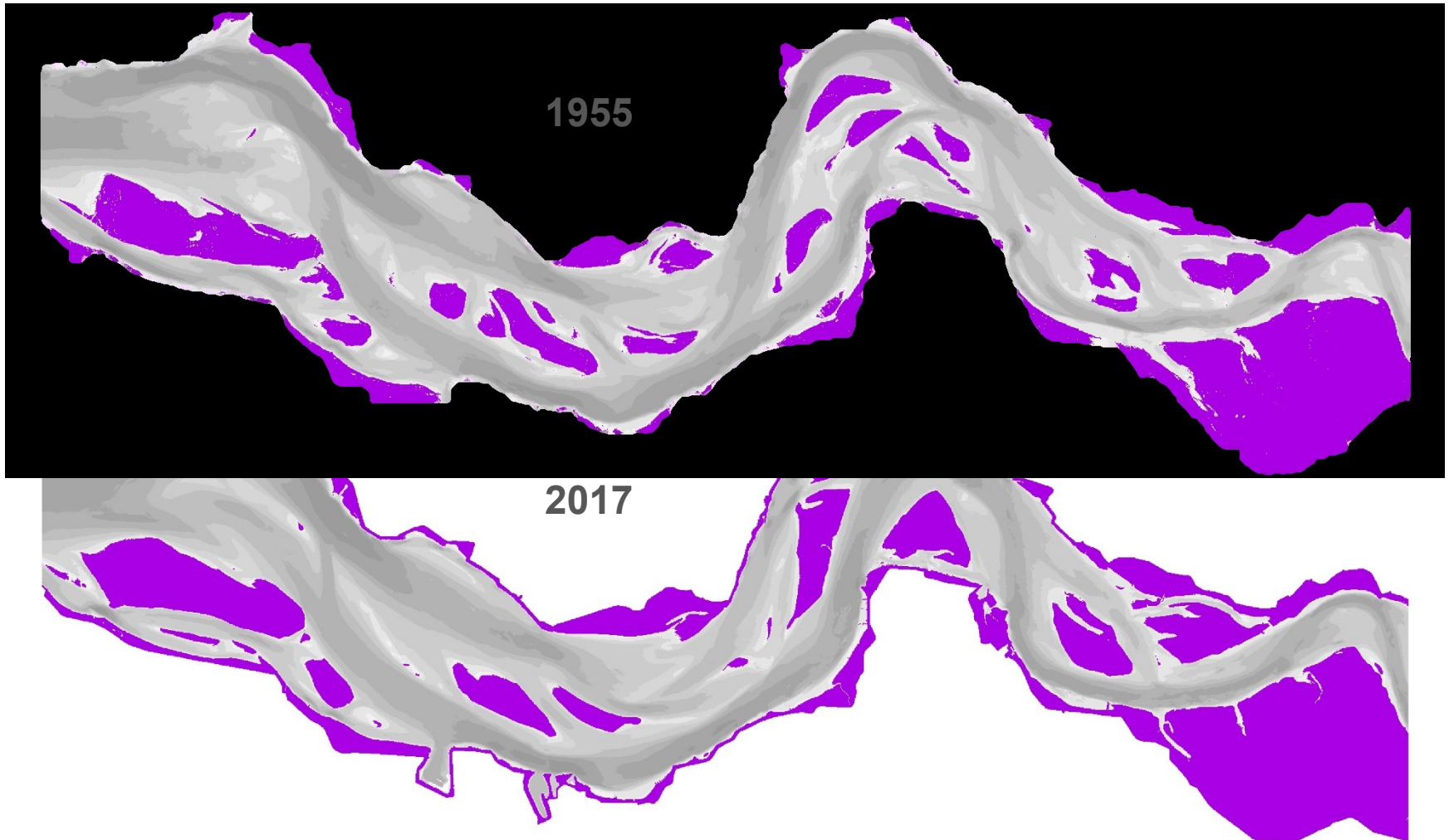
Shoals = “Platen”: tidal flats surrounded by channels

“Slikken” (= tidal flats between channel and embankment) display different developments

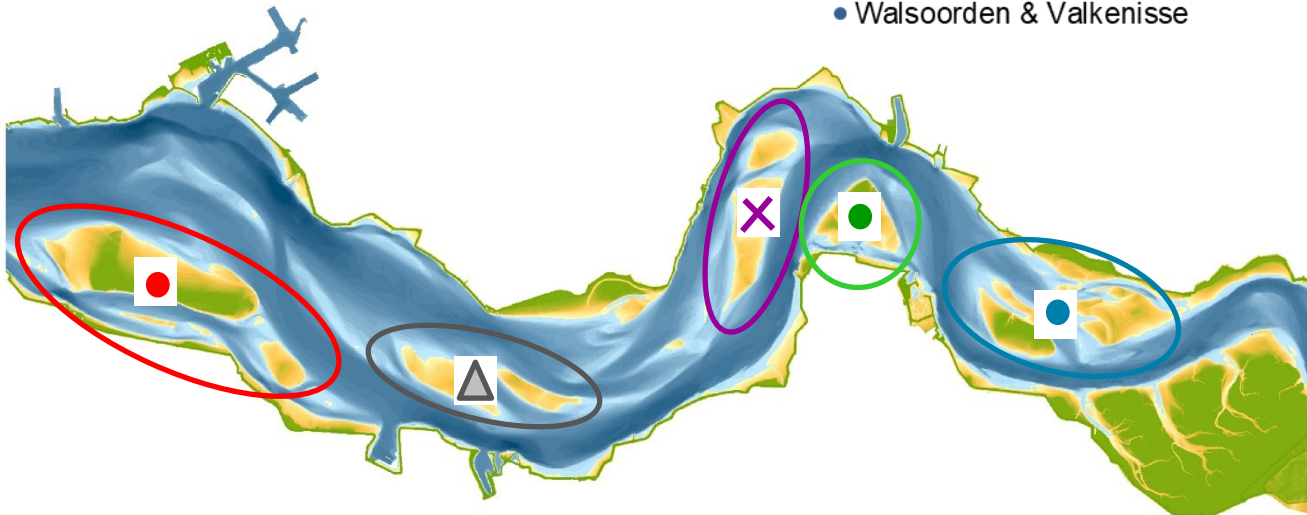
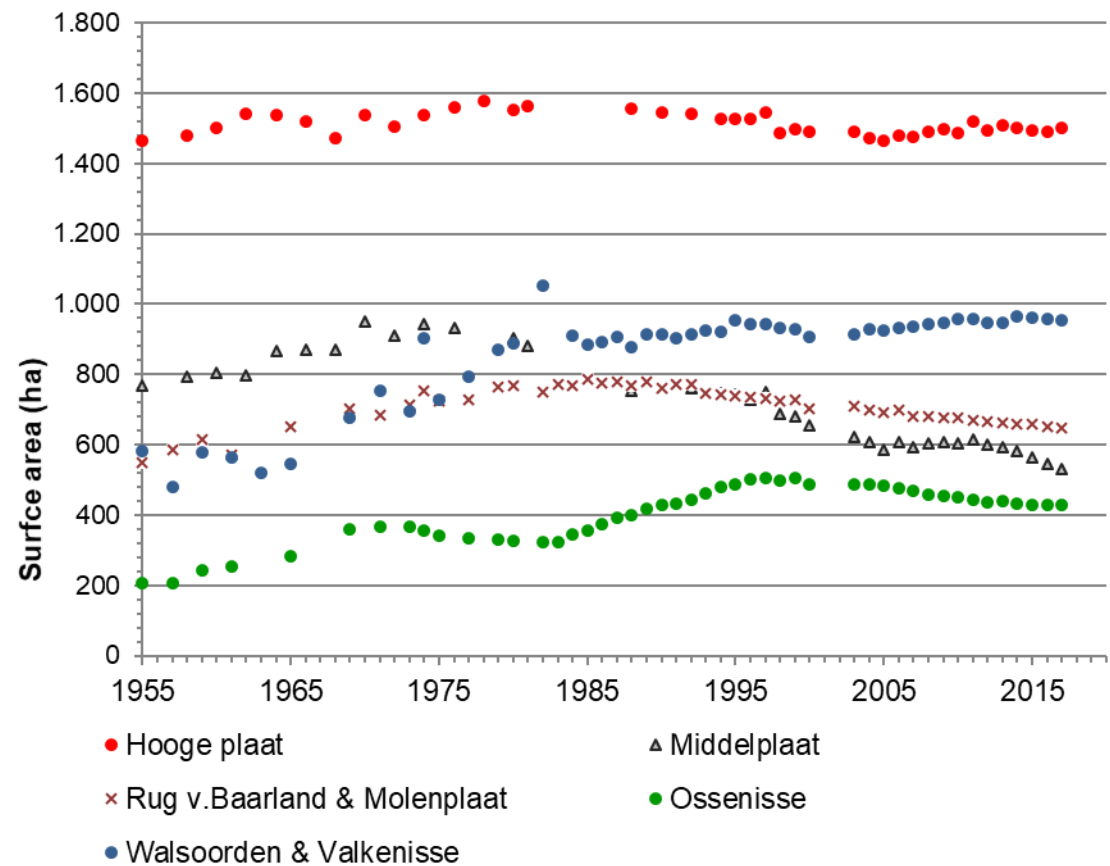
Three messages:

1. Ongoing consolidation of shoals: from fragmented shoal complexes to 2-3 large shoals per meso-cel
2. Developments (height, surface area) differ per meso-cel
3. Long-term changes govern, recent dredge disposal strategy (“plaatrandstortingen”) seem to have relatively limited impact

Consolidation of shoals

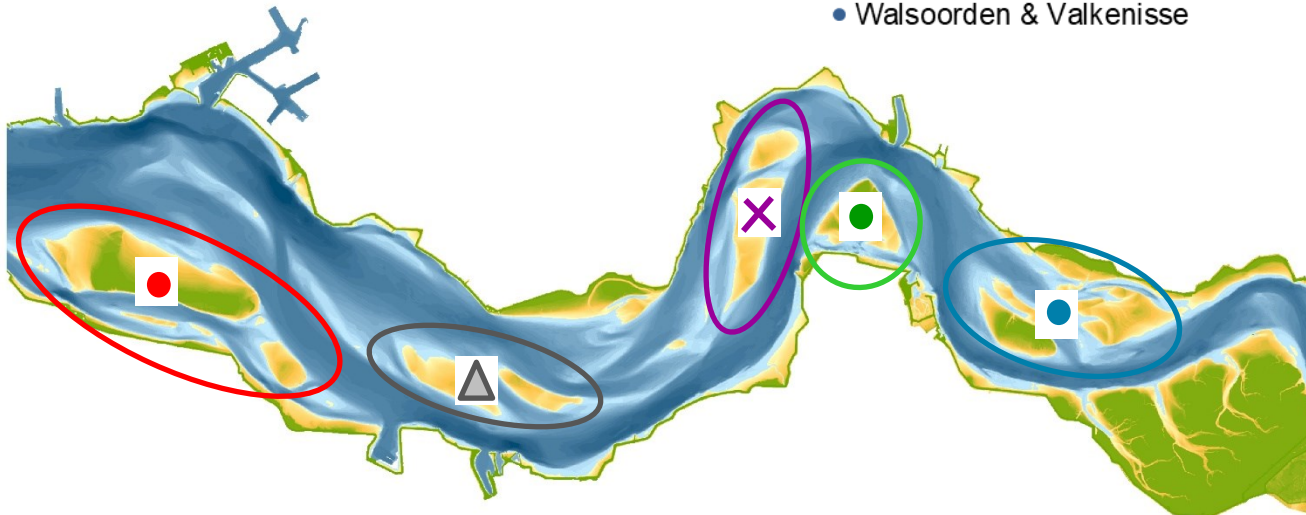
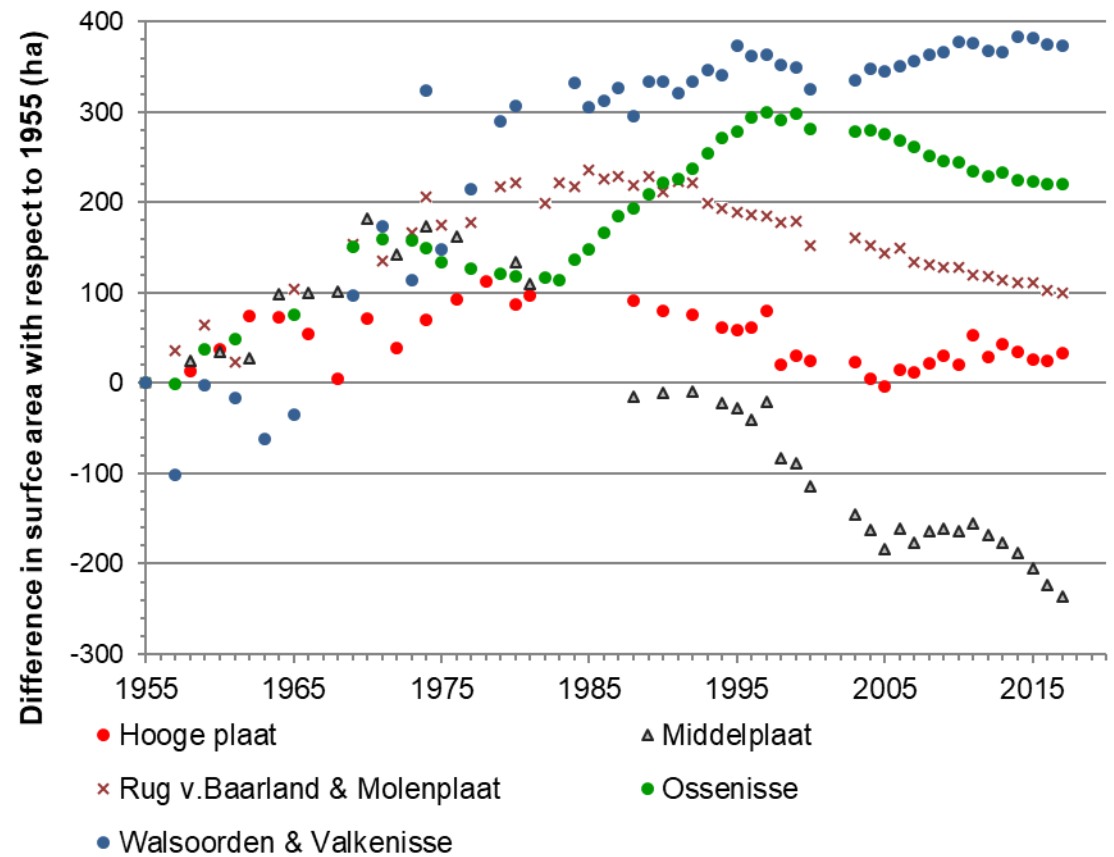


Development per macrocel: Area

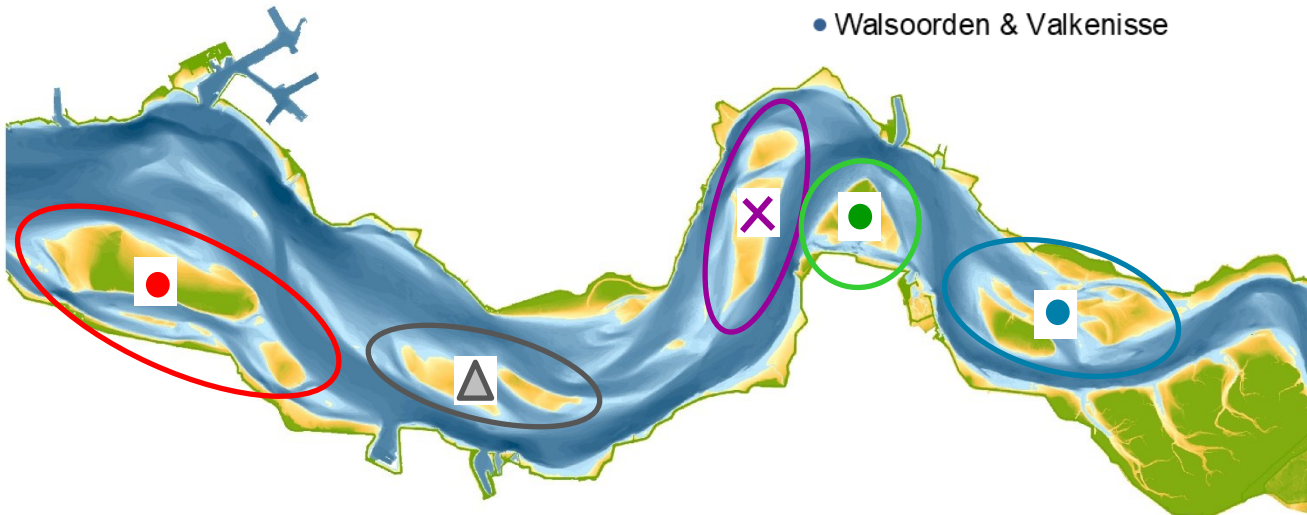
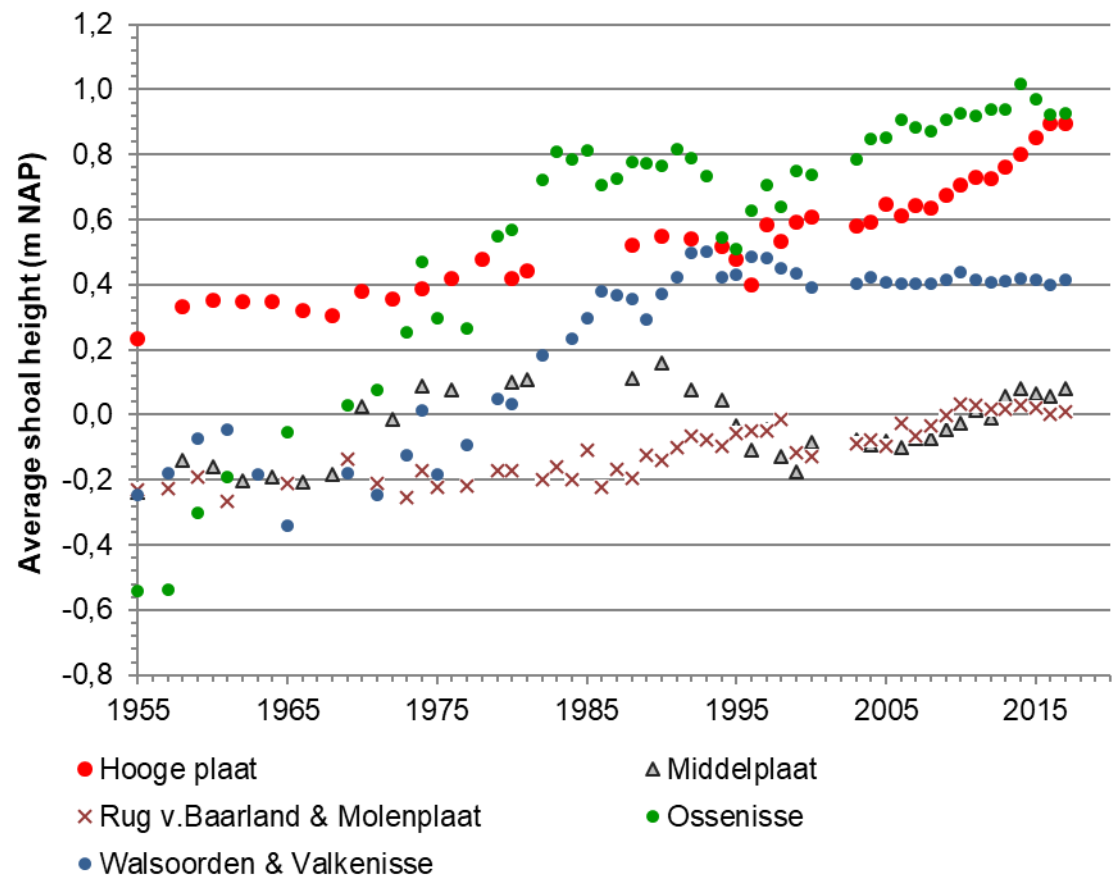


Area with height
over NAP -1,5 m

Development per macrocel: Area

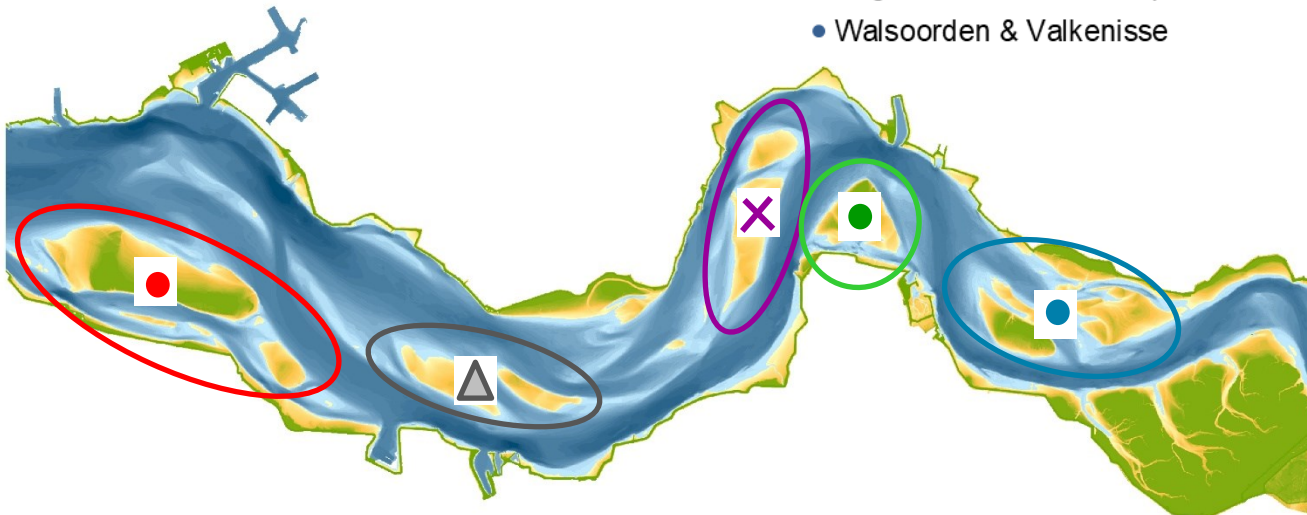
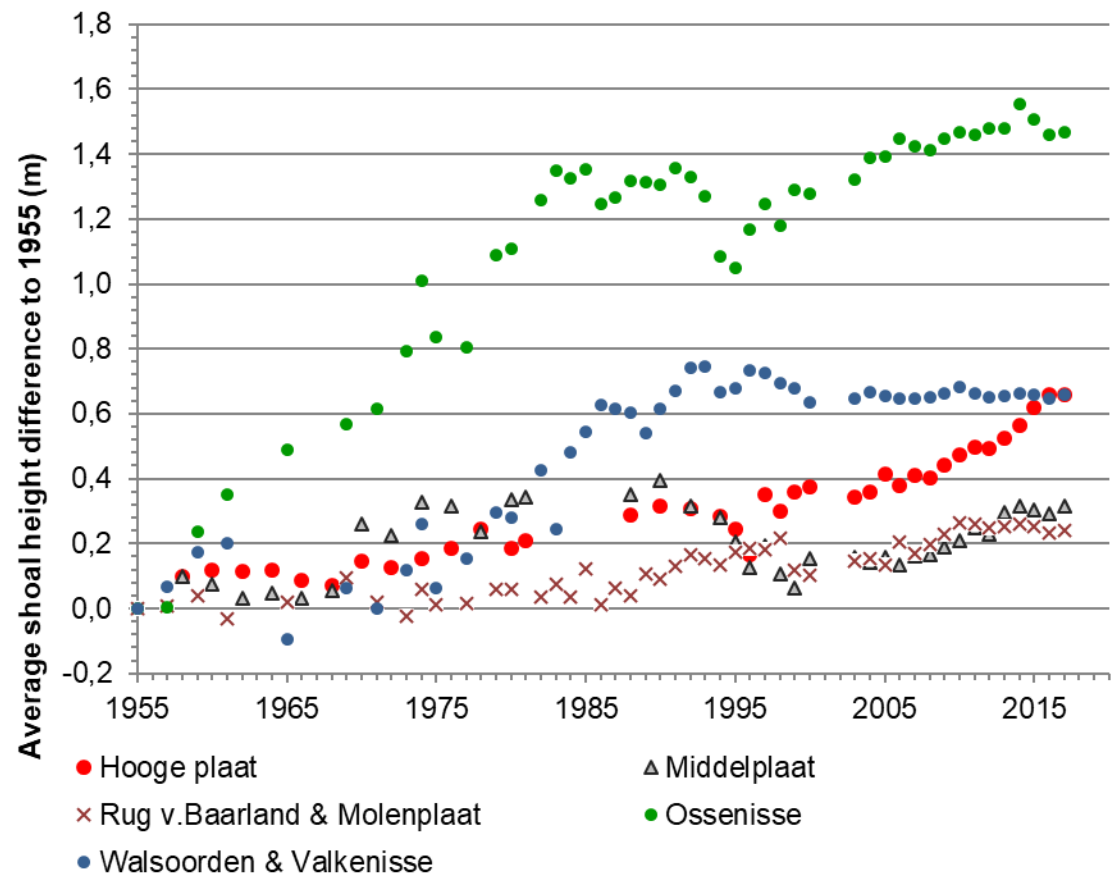


Development per macrocel: Height



Average height in
area with height
over NAP -1,5 m

Development per macrocel: Height



Average height in
area with height
over NAP -1,5 m

Long term development of shoals

Three messages:

1. Ongoing consolidation of shoals: from fragmented shoal complexes to 2-3 large shoals per meso-cel
2. Developments (height, surface area) differ per meso-cel
3. Long-term changes govern, recent dredge disposal strategy (“plaatrandstorting”) seem to have relatively limited impact

One request:

Changes are not driven by (changes in) tides, waves, sediment availability (dredge disposal), ... alone:

A conceptual model that can explain the (differences in) developments is needed